

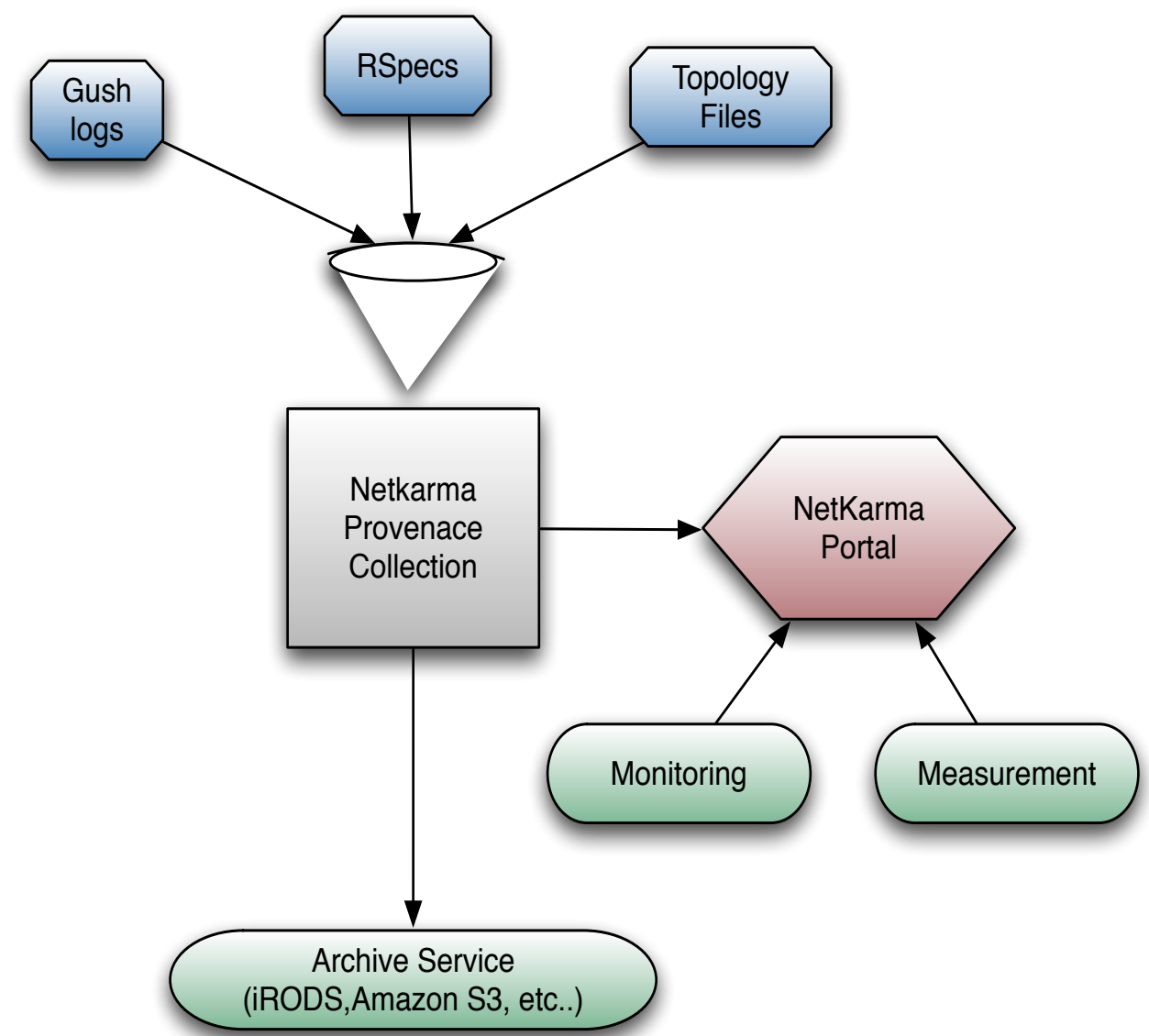


## Overview

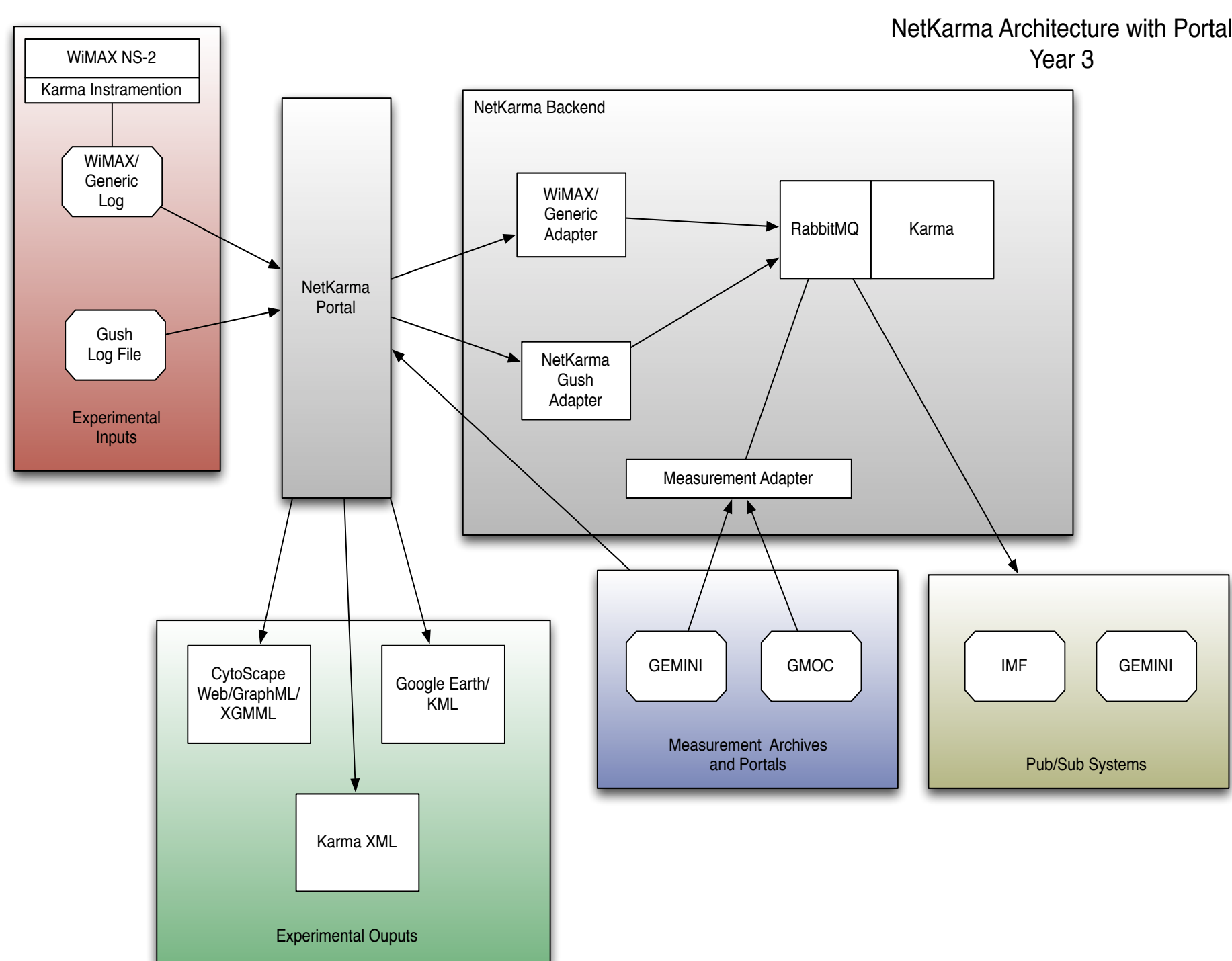
The NetKarma portal provides an experimenter focused way to:

- Capture data and workflow simply
- Create derived data products to help researchers understand their experiments
- Store data and configuration
- Visualize
  - Experiment workflow
  - Resources
  - Measurement Data
- Link to other GENI components

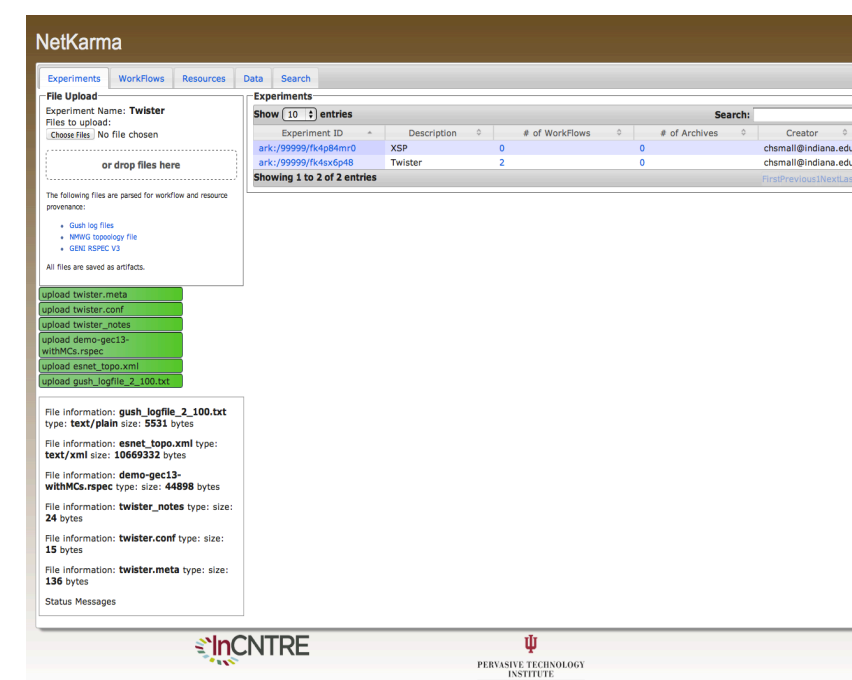
## Design



## Integration

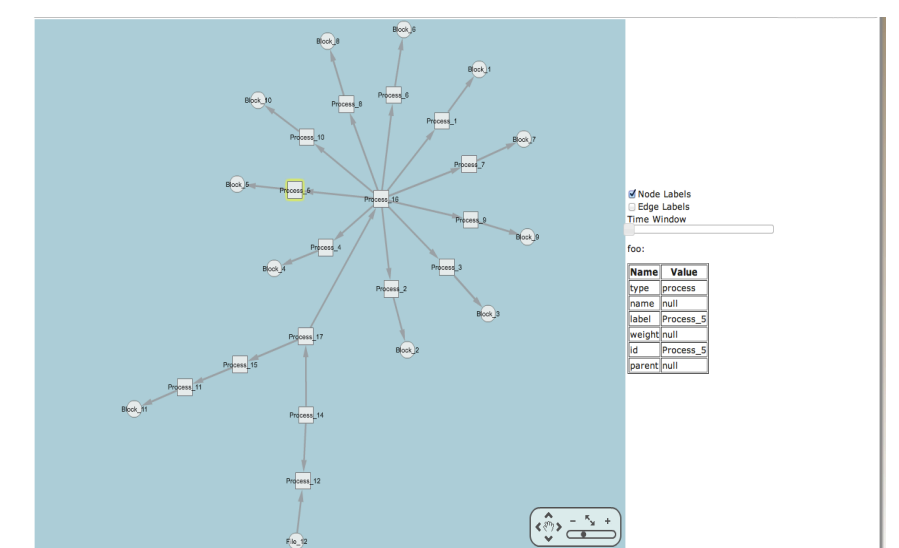


## Visualization

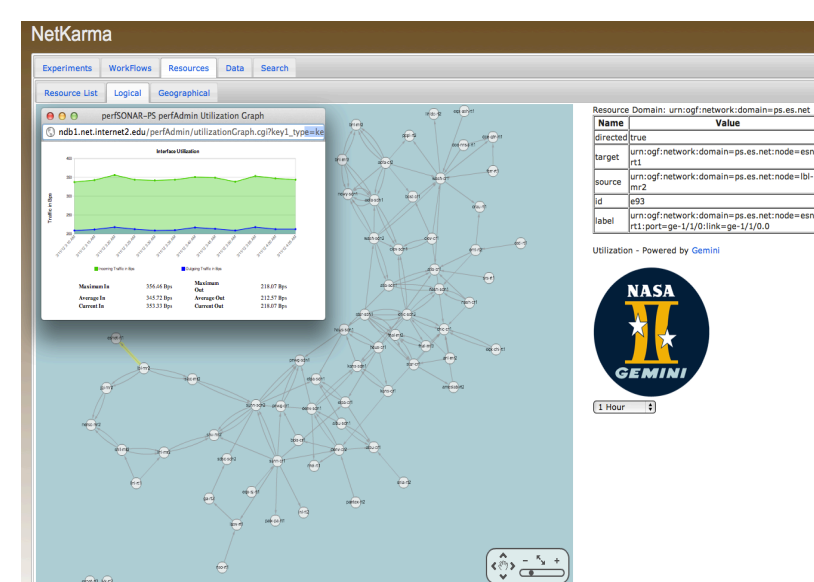


## Experiments

## Workflow



## Resources



The NetKarma portal utilizes the provenance collection to tie many of the disparate data sources in GENI into a single view. It combines data and resources from:

- Data Archive Services (iRODS)
- Measurement (Gemini)
- Status (GMOC)

## Data Archives

