

GENI Enabled Software Defined Exchange (SDX) Washington International Exchange (WIX)

GENI Engineering Conference 25

March 14, 2017

Miami, Florida

Tom Lehman (UMD/MAX)

Xi Yang (UMD/MAX)



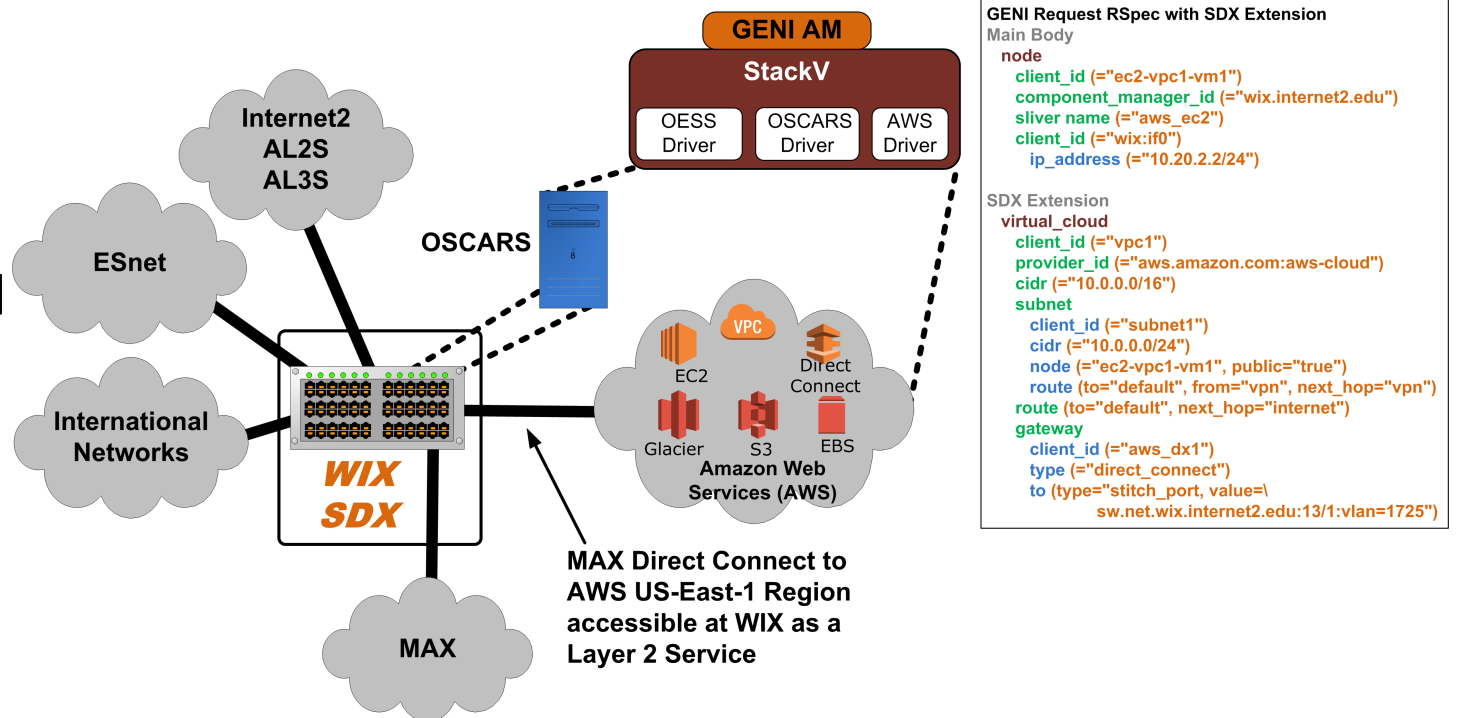
UNIVERSITY OF
MARYLAND



WIX – GENI Enabled SDX

- WIX is a production Exchange Point in McLean, Virginia (jointly operated by Internet2 and MAX)
- Includes OSCARS service enabling Dynamic Cross Connects
- MAX has made its AWS Direct Connect Service available at the WIX via Layer2 VLAN service
- MAX runs a GENI AM/StackV instance with OSCARS and AWS drivers

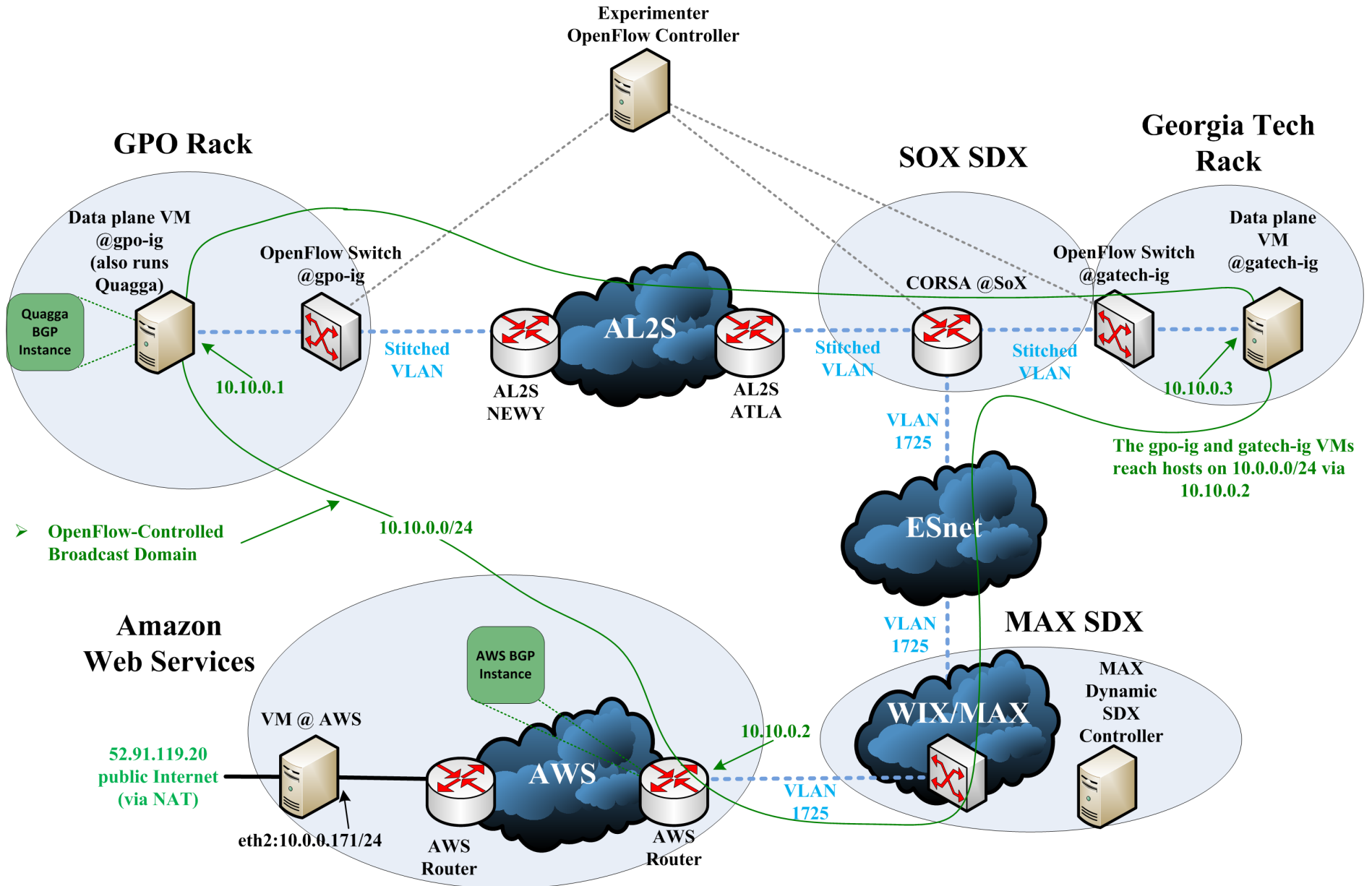
- GENI
Stitching to
WIX for GENI
Slice with
AWS
attachment



GRAM based GENI AM Policy Control for SDX and SD-SDMZ

- GRAM with ABAC like policy features for resource access control:
 - Federation(Clearinghouse), Virtual Organization (Project), Slice, User
 - VLANs (total), Bandwidth, VMs, Ceph Storage, SR-IOVs
- Future Features Desired:
 - Realtime policy adjustments
 - More policy granularity (specific VLANs, resources)
 - SDXs with compute and storage embedded

GEC 25 Demonstration - WIX



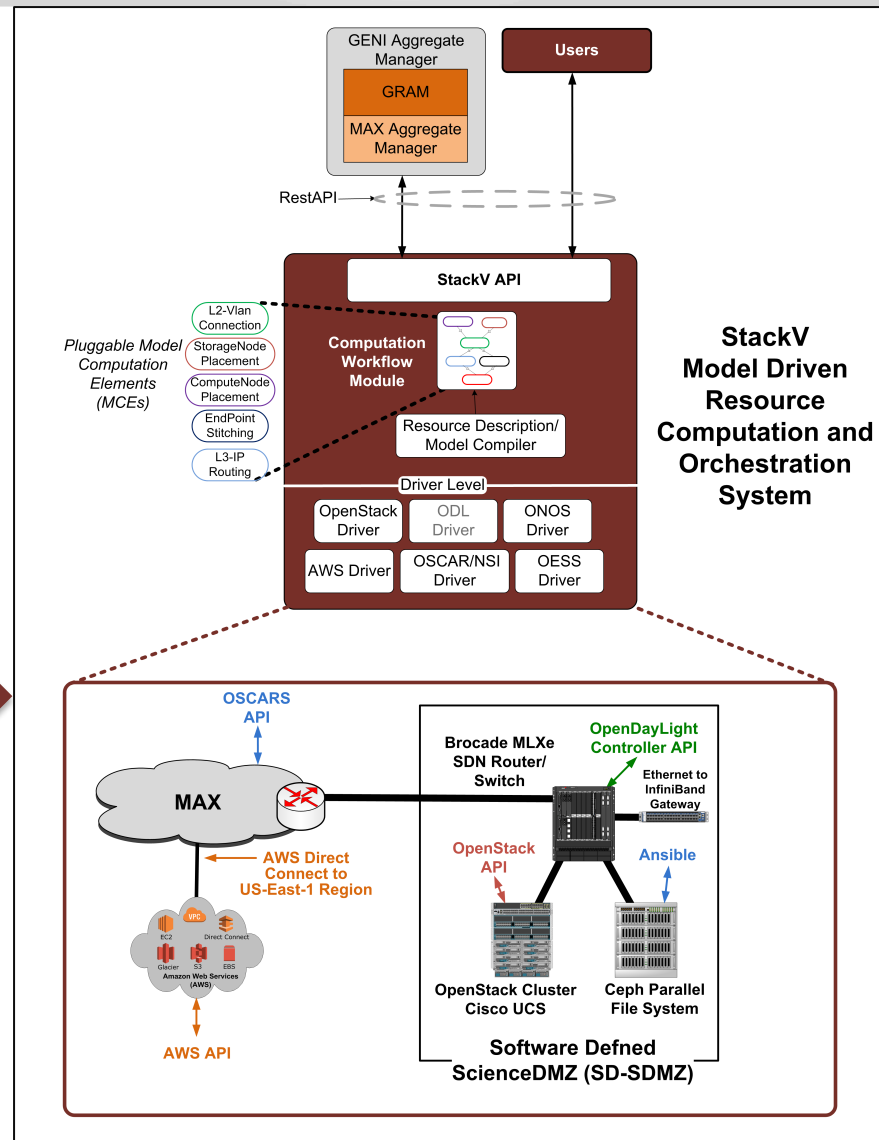
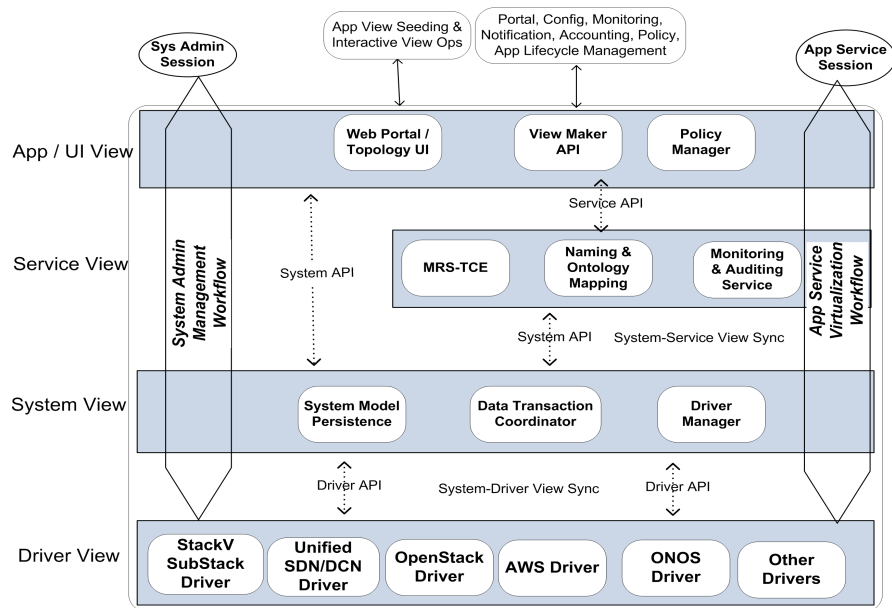


Thanks



Extras

StackV Software

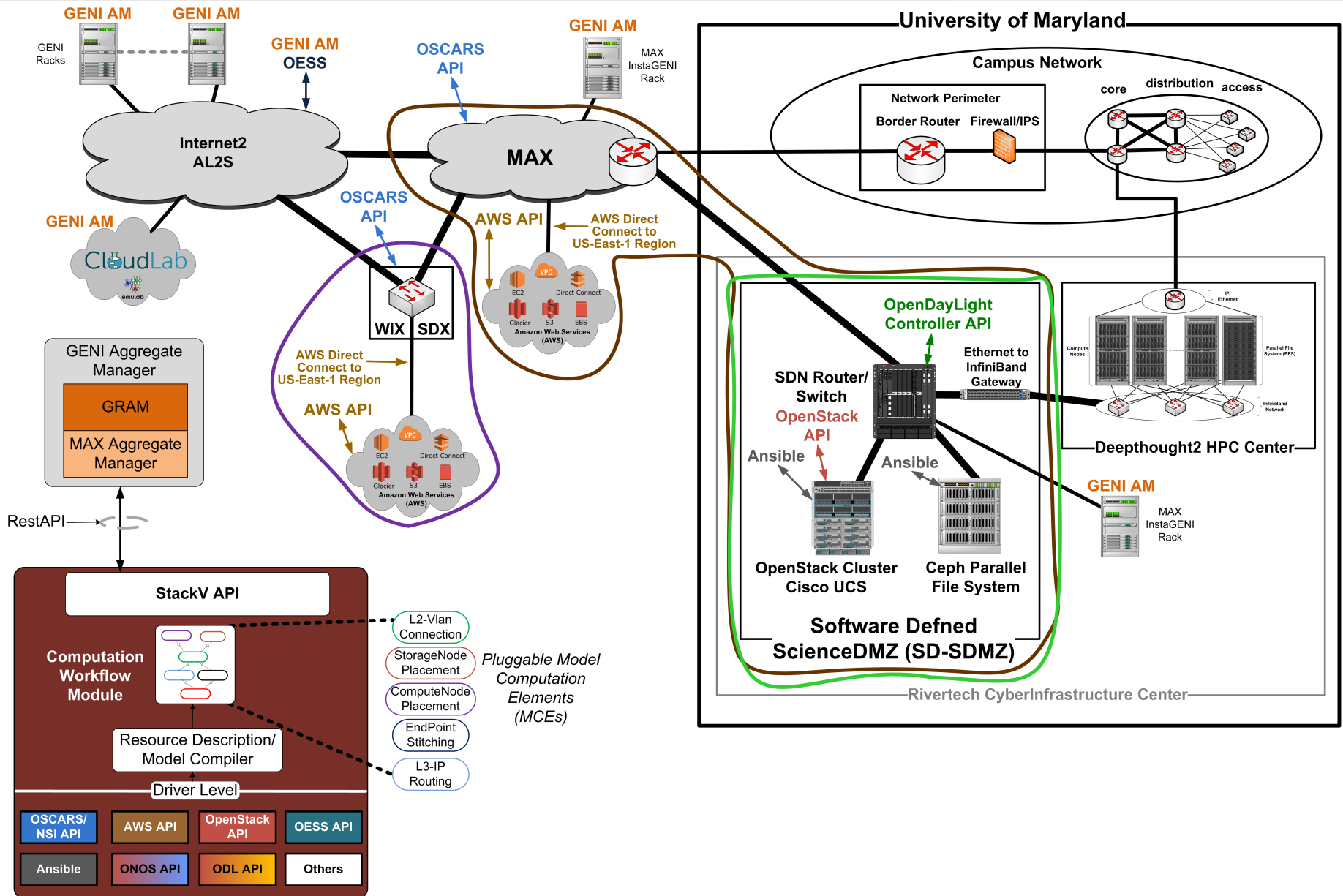


Architecture

Conceptual View →

- UMD/MAX developed StackV is an open source model driven orchestration system:
 - github.com/MAX-UMD/stackV.community
 - video: tinyurl.com/umdmx-stackv
- Native StackV Application (Northbound) API
- Access via GENI Aggregate Manager API
- Multiple Drivers, Southbound APIs

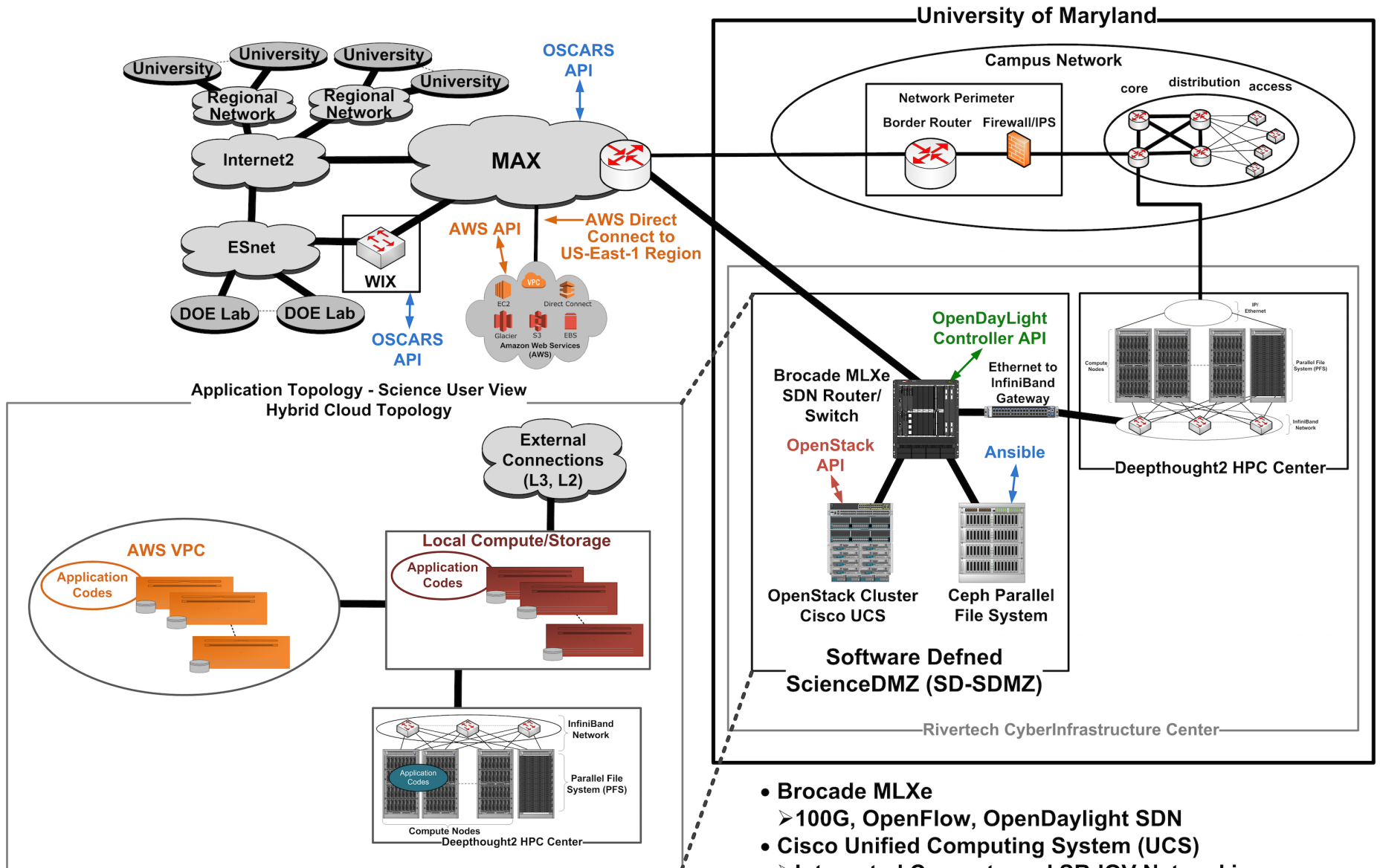
Software Defined in Context of R&E Cyberinfrastructure



WIX as a GENI Enabled SDX

- Objective is to control Exchange Point resource utilization, in an automated fashion:
 - at the Federation (Clearinghouse) level, Virtual Organization (Project) Level, Slice Level, and User Level
 - also need to be able to adjust authorizations and access policies in near-real time
- Current SDX Functionality
 - Leverages GRAM GENI AM based policy features
 - Establish resource quotas on a Clearinghouse, Slice, or User basis
 - Enforce allocation by total bandwidth, number of VLANs in use
- Future Capabilities Desired
 - Additional parameters available for resource access
 - Interfaces, VLAN Ranges
 - at the Federation (Clearinghouse) level, Virtual Organization (Project) Level, Slice Level, and User Level
 - Ability for real-time resource utilization adjustments based on user priority and preemption
 - SDXs with compute and storage embedded

SD-SDMZ Advanced Hybrid Cloud Service



- Brocade MLXe
 - 100G, OpenFlow, OpenDaylight SDN
- Cisco Unified Computing System (UCS)
 - Integrated Compute and SR-IOV Networking
- Ceph High Performance Storage System

UMD SD-SDMZ Services

Advanced Hybrid Cloud (AHC) Service

On Demand, Application Specific, Hybrid Topologies which include one of more of the following:

- ✓ Local OpenStack Virtual Machines (with SRIOV interfaces to network and storage)
- ✓ Dedicated Local Ceph Storage Resources and Connections
- ✓ Integrated AWS Resources (Virtual Private Cloud (VPC) or Public)
 - User controlled AWS resources, or
 - SD-SDMZ facility provided AWS resources (EC2, Storage, S3 endpoints)
- ✓ Network Connections
 - AWS Direct Connect integration for access to AWS Public or VPC resources
 - Layer2/Layer3 External Connections across Internet2, ESnet, others
 - Customized topology templates for individual user requirements
- ✓ Future:
 - Service connections/integration with other public cloud infrastructures
 - Service connections/integration with other R&E cloud, HPC, data repositories, etc.
 - Schedulable Services

Longer Term Vision for SDX and Software Defined ScienceDMZ (SD-SDMZ)

- Longer term, imagining a distributed ecosystem of SDXs and SD-SDMZs which can be orchestrated to enable control/tailoring of end-to-end flows
- This may be thought of as “democratizing the middlebox functions and infrastructure”.