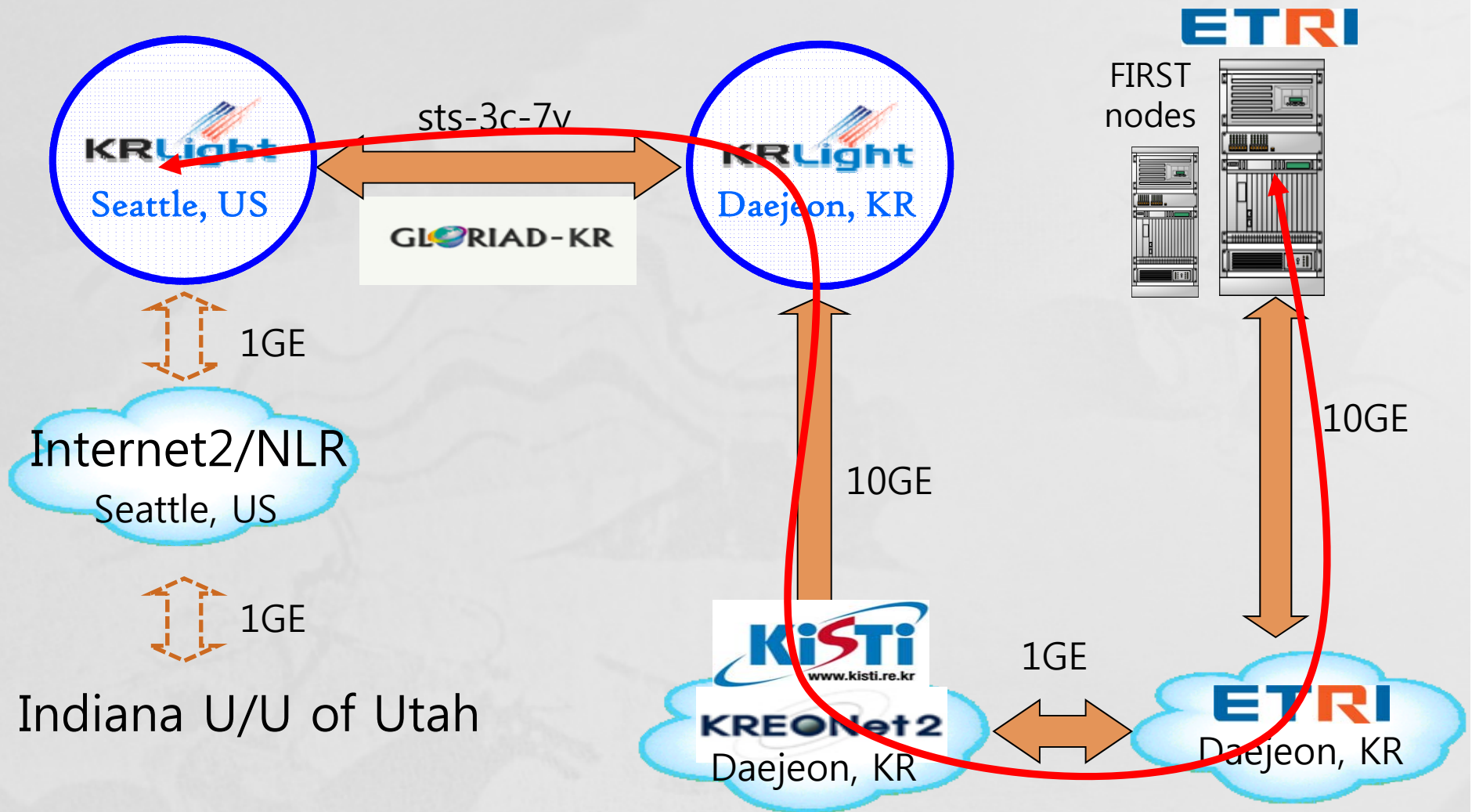


International GMOC Collaboration over K-GENI

Dongkyun Kim – KISTI, Myung-Ki SHIN – ETRI, James Williams – IU
mirr@kisti.re.kr, mkshin@etri.re.kr, william@indiana.edu

March 17, 2010@OMIS WG Meeting, GEC7 in Durham

Korea-USA K-GENI Connectivity



KRLight Nodes Relocation to PNWGP



KRLight Nodes



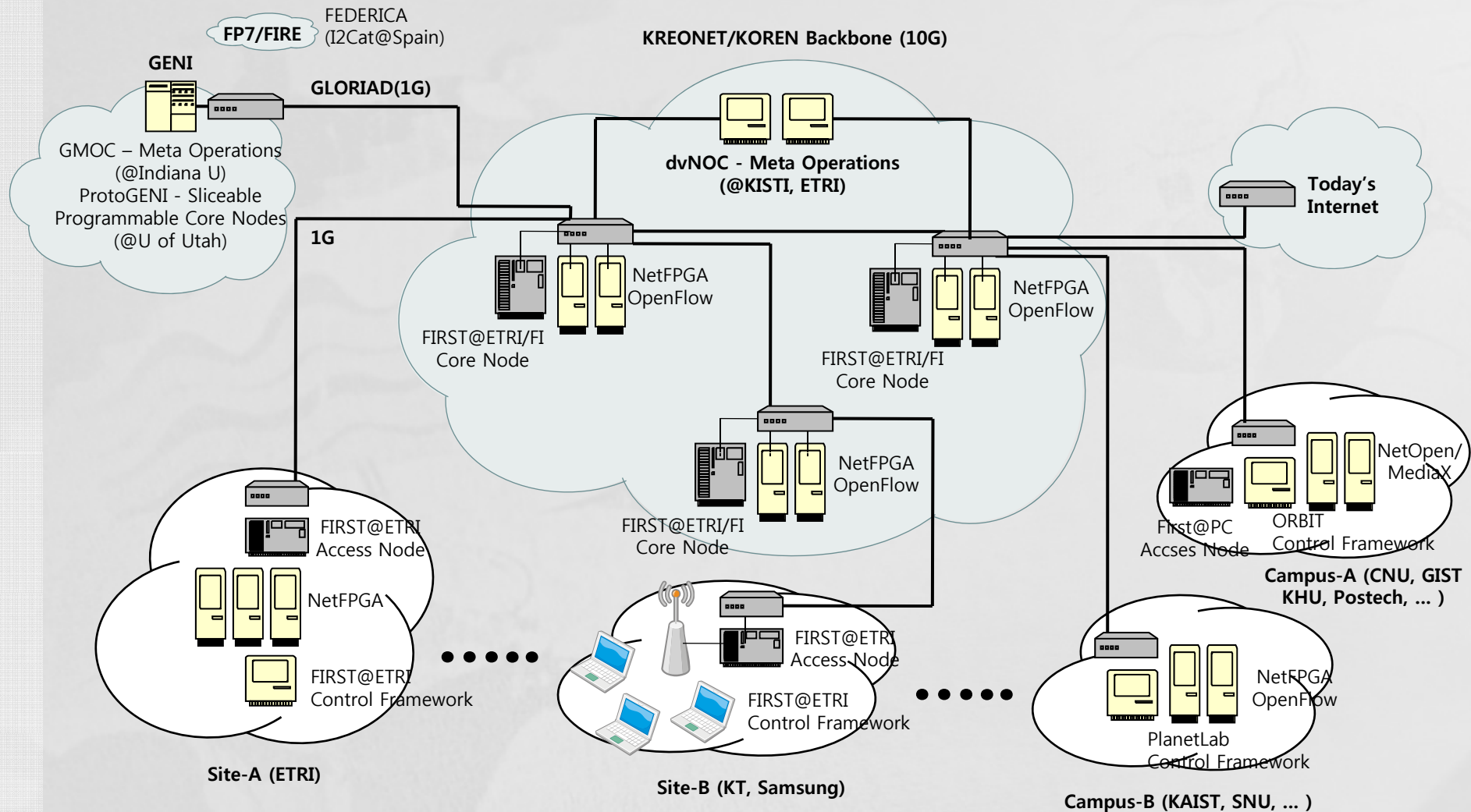
Internet2 Nodes



NLR Nodes

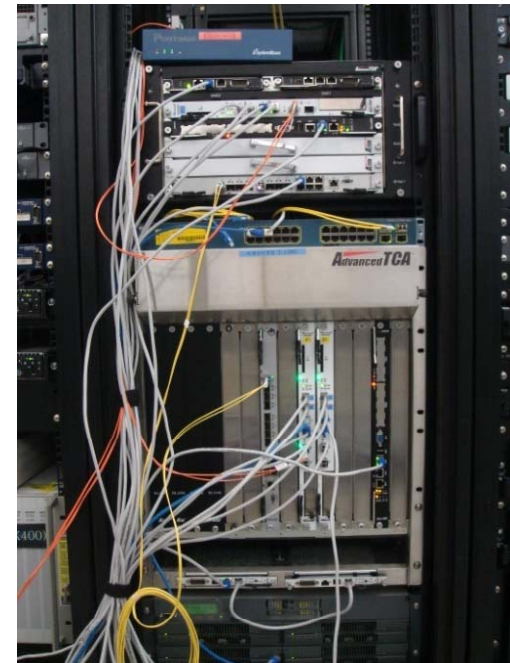
Pacific North West GigaPoP Colo-Space@8F, Westin Building

Federations over K-GENI & FI Backbone in Korea



FIRST@ETRI Platforms

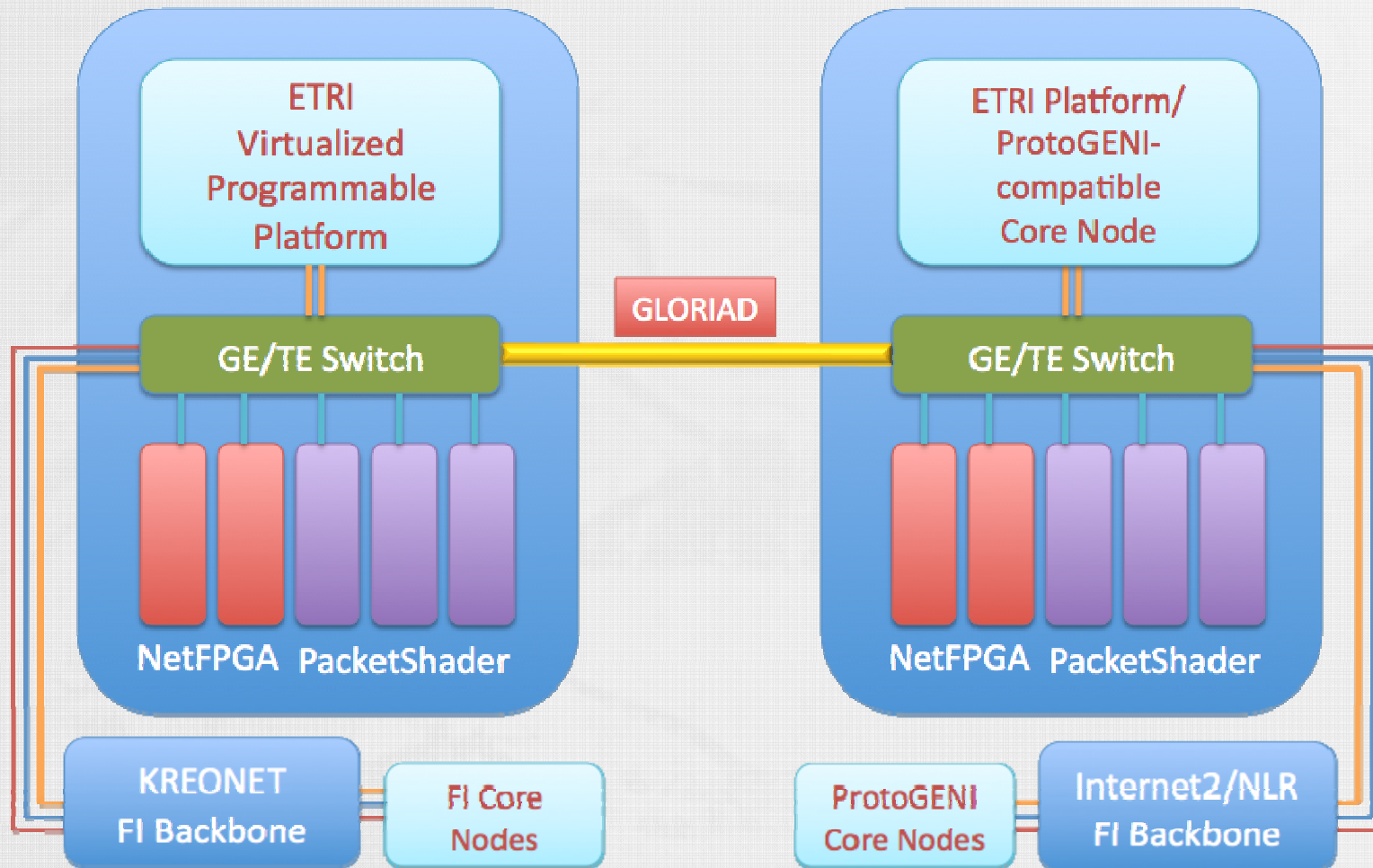
- Hardware-based platform
 - Virtualized programmable substrate that operate at high speed
 - Programming APIs for researchers (e.g., hardware-based packet processing APIs)
 - Common platform interfaces (e.g., Component Manager, Aggregate Manager, Slice Authority, etc.)
- Dynamic end-to-end slice operations
 - ProtoGENI compatible control framework
 - Allocate Rspec to sliver and link (e.g., CPU, memory, bandwidth, etc.)
 - Change Rspec during operation



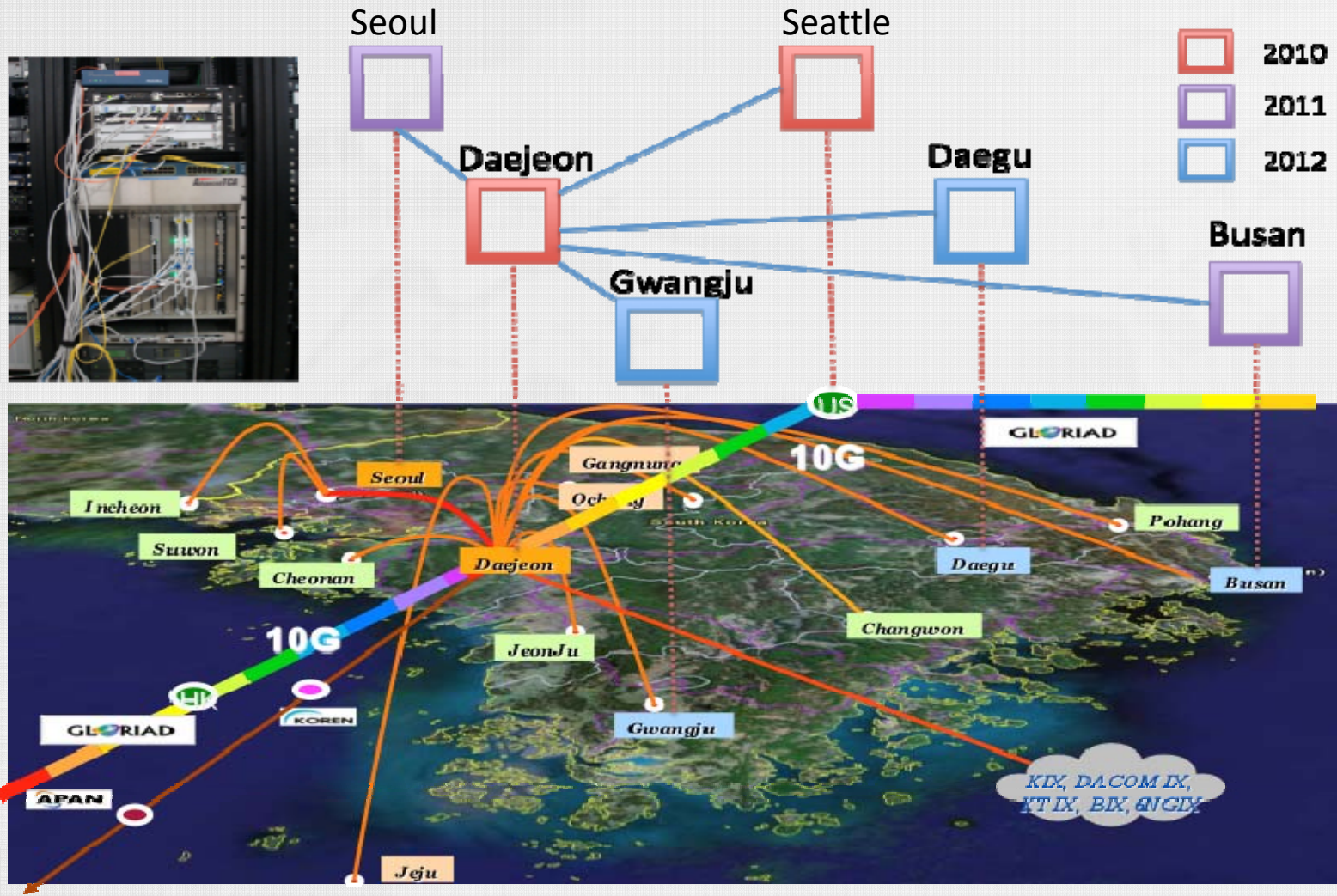
Core Node Interconnections

KREONET Daejeon PoP in Korea

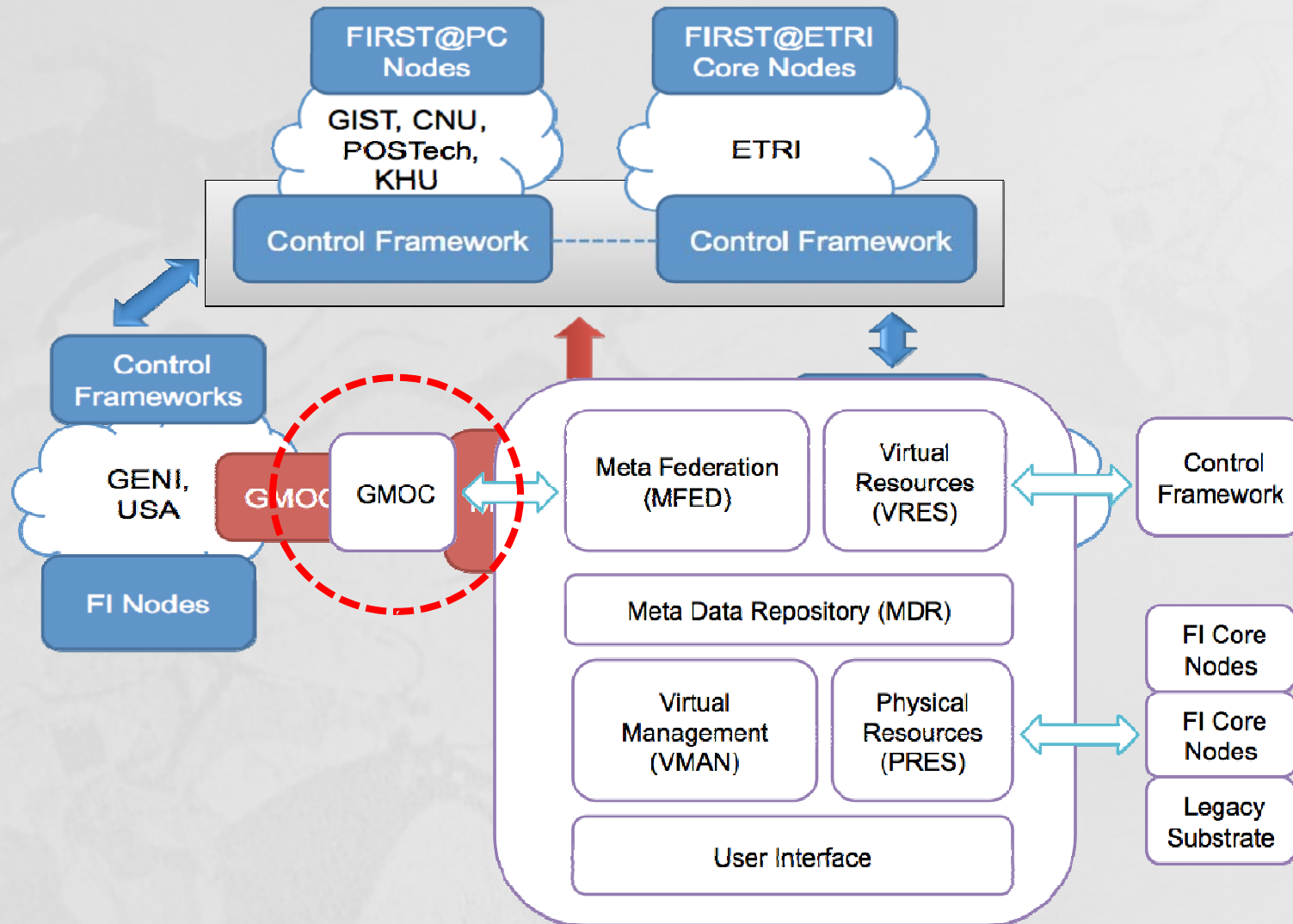
GLORIAD-KR Seattle PoP in USA



Node Deployment Plan on KREONET



VirtualNOC Development



GMOC Collaboration Plan (draft)

- Local GMOC Deployment at KISTI (and ETRI)
 - To come up with federated operations plan and design efficiently
 - To do experiments without intervention to main system
 - To collect operational data for the sharing test purposes
- GMOC Collaboration over K-GENI
 - Connecting two systems in the same VLAN across national boundaries
 - Sharing operational data between GMOC-US and GMOC-KR
 - Visualizing shared operational data set in the federated way
- As a Next Step...
 - GMOC and VirtualNOC Federations: GMOC-KR comes first
 - Performing Joint Demonstrations: @GEC8 and/or @GEC9

Further Works

- **Setting-up K-GENI 1 Gbps End-to-End Connectivity**
 - ETRI/KISTI (Korea) – Seattle KRLight (USA)
 - VLAN connection to IU and U of Utah over Internet2/NLR
- **Korea-USA Federated Meta Operations**
 - GMOC and VirtualNOC (of dvNOC)
 - Experiments of FI operational data sharing and federations
 - **Scheduled meetings with IU and KISTI/ETRI team**
 - **Local GMOC deployment and following experiments**
 - **Demonstrations at GENI Engineering Conferences**