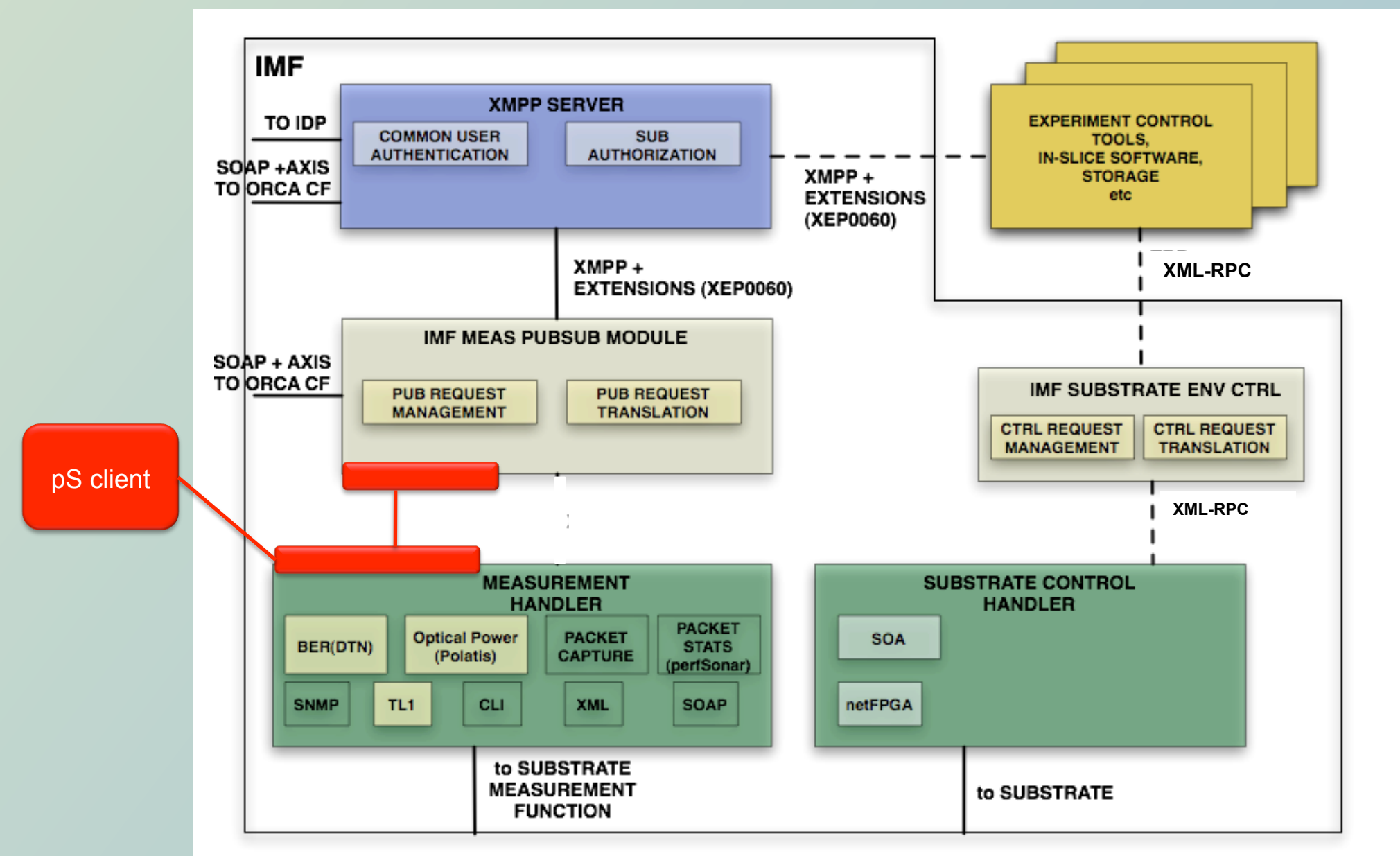
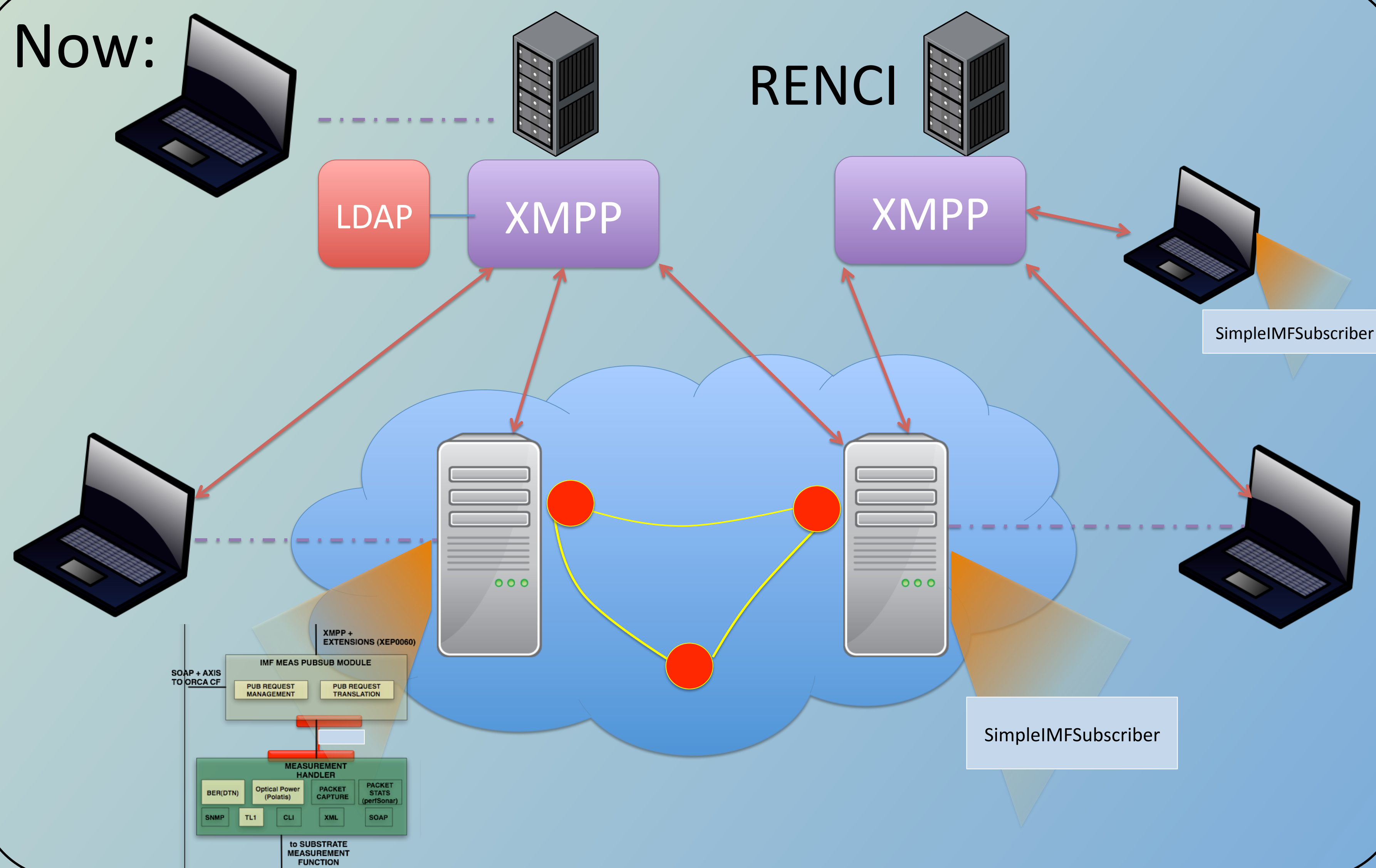


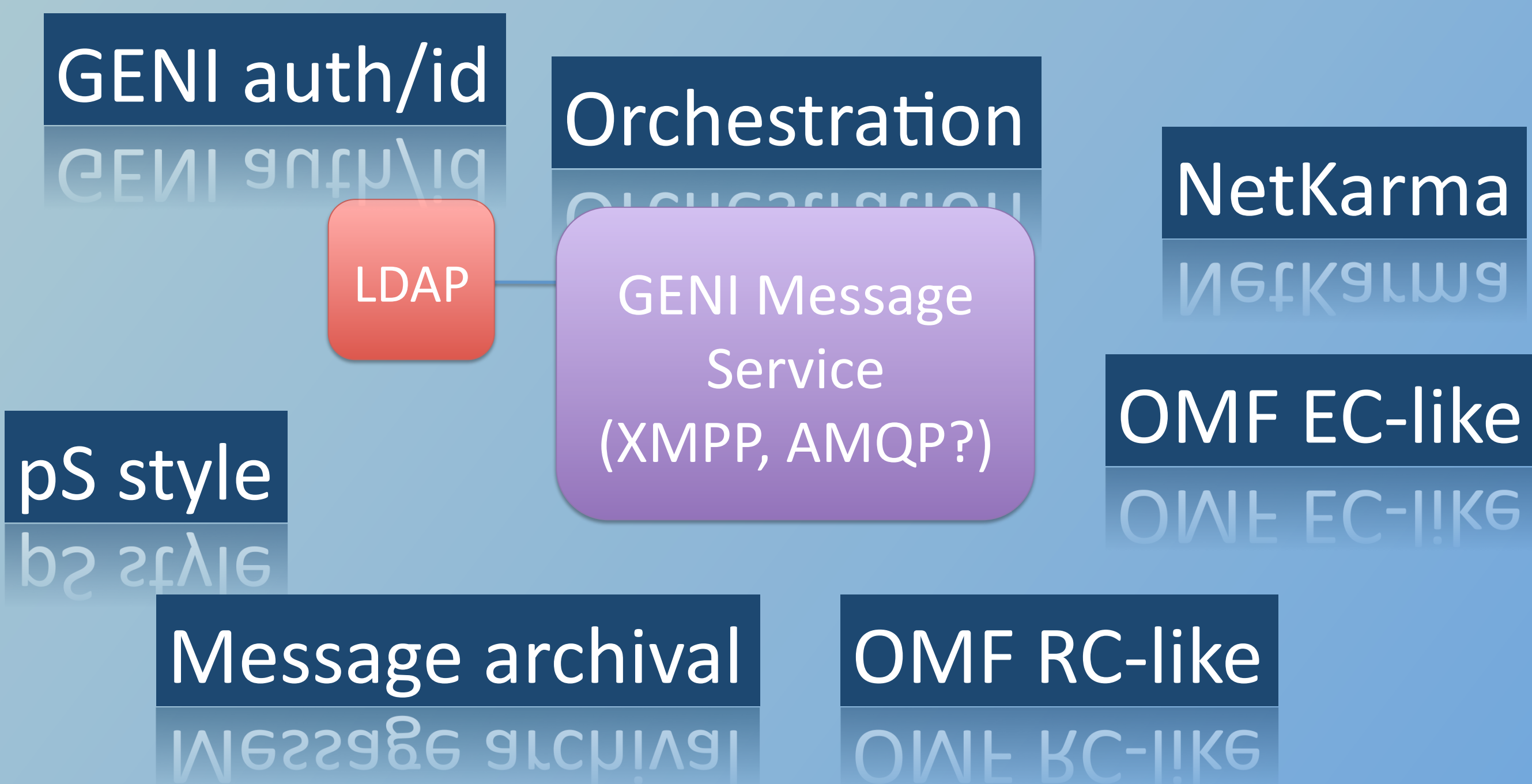
Before:



Now:



Later:



1. Run messaging clients such as psi or Adium on two laptops. Show that they are pointing to geni-imf-xmpp server (GENI Message Service). Send message from one to the other using that server.
2. Federate geni-imf-xmpp Openfire with geni-imf-dev Openfire. Repeat Demo Step 1.
3. Create an ORCA slice with two vm's. SSH into each vm from one of the laptops. Start IMF on vm1, start SimpleIMFSubscriber on vm2. Show measurements generated by vm1 received by vm2.
4. Open management interface of Openfire and show where we can see (a) attached messaging clients ("sessions->clients"), (b) federated servers ("sessions->servers"), (c) authentication for clients. Demonstrate locking out a client.
5. Run SimpleIMFSubscriber on your laptop ? 😊