

---

# Experiment Control Tools for ORCA Control Framework

Anirban Mandal

Renaissance Computing Institute (RENCI)



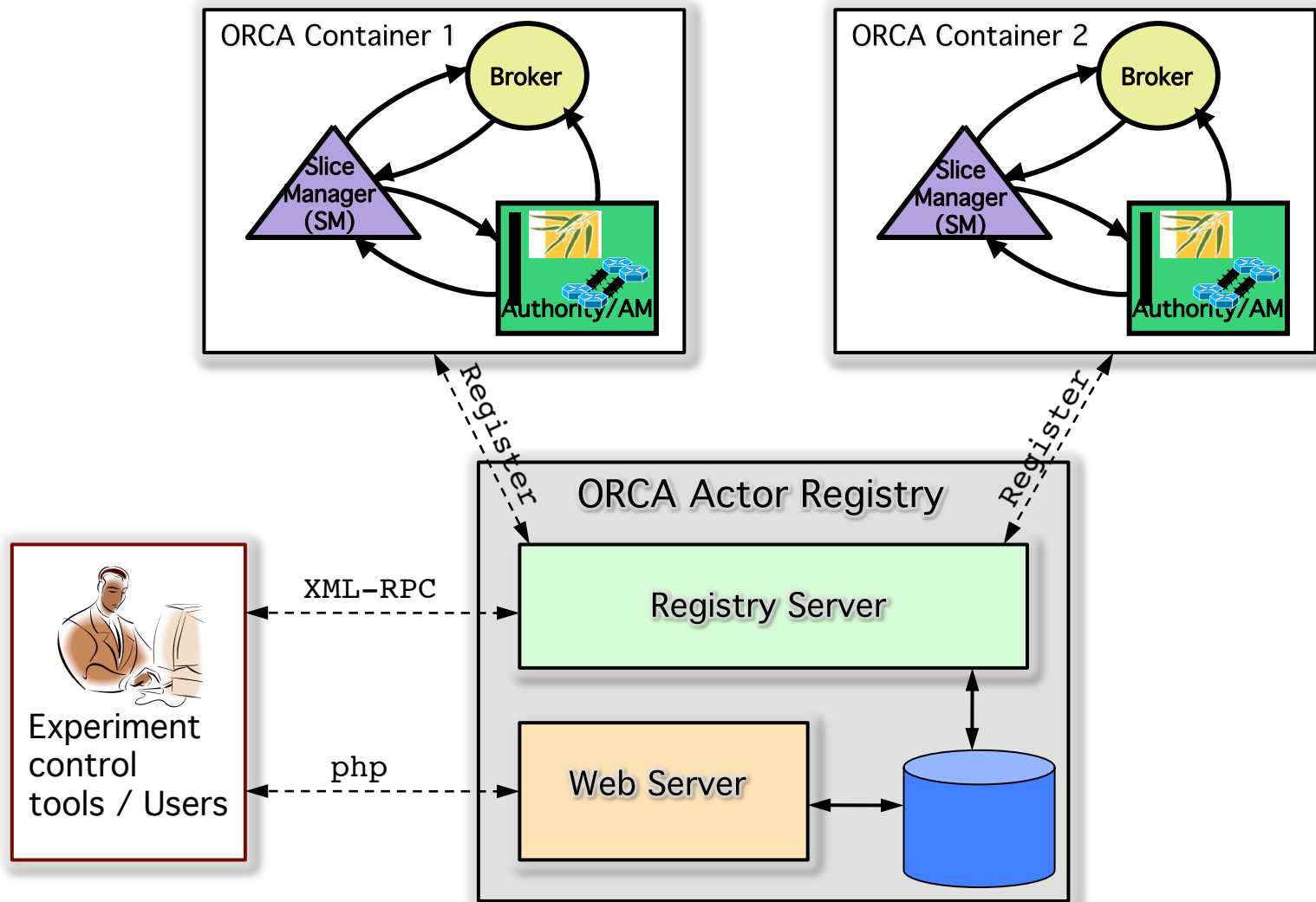
# ORCA Actor Registry

---

- Snapshot of available actors from various ORCA containers
  - Users can use this for resource discovery and other queries
- Two new properties need to be set during container startup to register new actors
  - `registry.url=http://geni.renci.org:19999`
  - `registry.method=registryService.insert`
- Registry contains information about actors - brokers, authorities (AM) and slice managers (SM)
  - actor name, guid, type, description, public keys and certificates



# ORCA Actor Registry



# Actor Registry

---

- Users can visit <http://geni.renci.org/actors.php> to view current set of actors registered with the registry
- Users can also programmatically query the registry using an XML-RPC interface

```
String url = "http://geni.renci.org:19999/";  
XmlRpcClient client = new XmlRpcClient(url);  
Vector params = new Vector(); params.clear();  
String result = (String) client.execute("registryService.getActors",  
params);
```



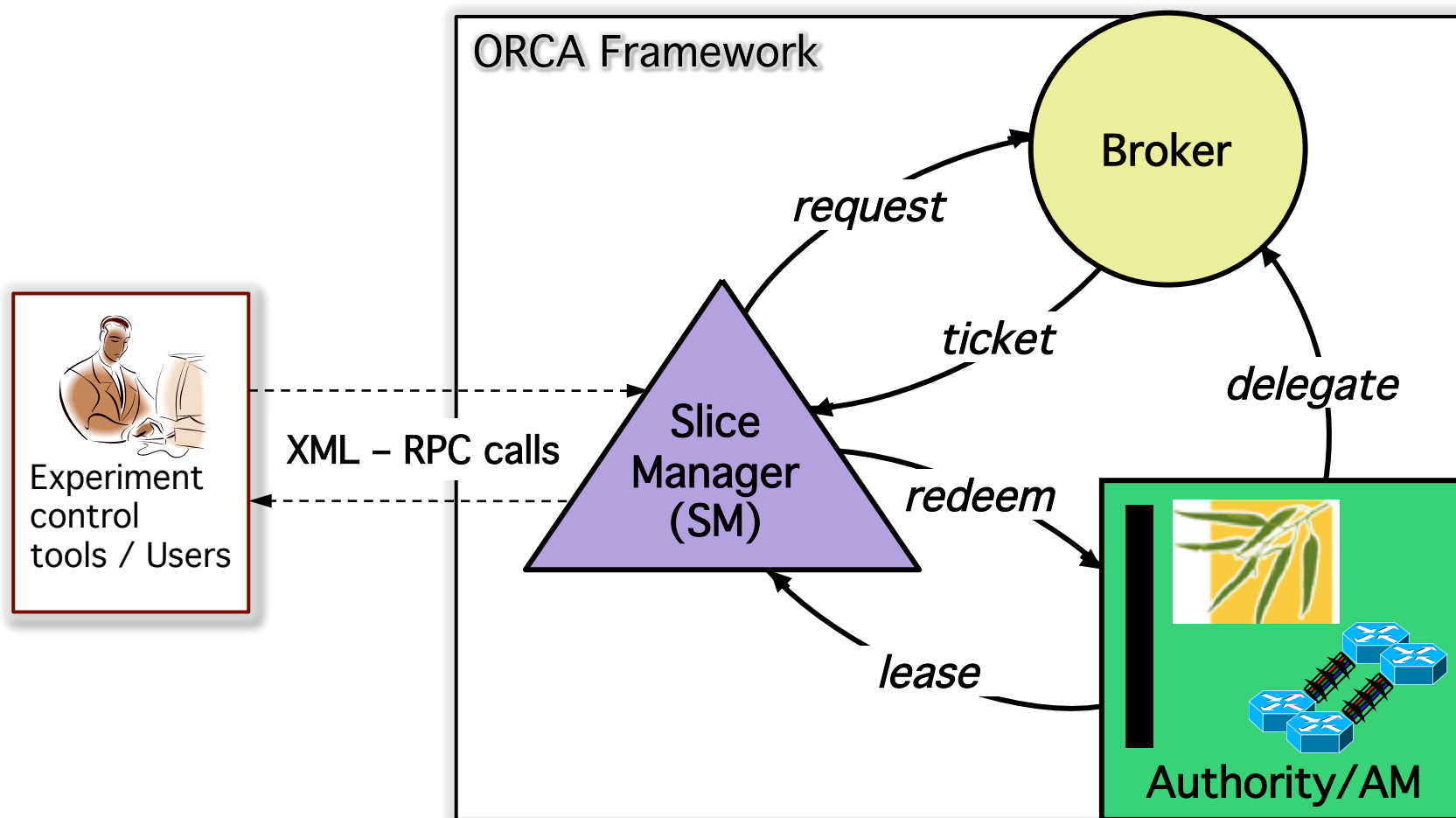
# XML-RPC Controller

---

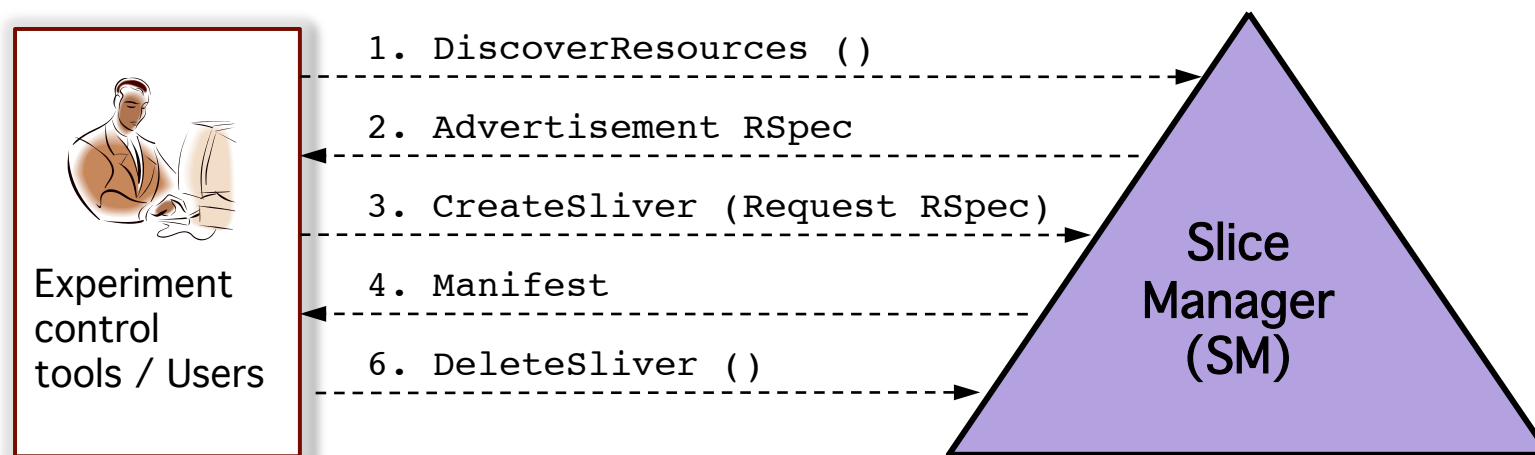
- Goal: Provide an XML-RPC interface to ORCA for experiment control tools and external users
- Tools/users would use this interface to
  - discover available resources
  - instantiate and destroy experiment slivers
- Initial version of ProtoGENI-like XML-RPC interface available on an ORCA SM
- Generic slice manager acts on behalf of experiment control tools/user
- Details of control framework hidden from user



# Overview



# Interface Details



- These interfaces provide a minimal set of features
  - DiscoverResources(), CreateSliver(), DeleteSliver()
- Extended set of features (available later) would include
  - GetTicket(), RedeemTicket(), UpdateTicket(), UpdateSliver()
  - Add support for resource representation using NDL