

# K-GENI & Virtualized Programmable Platform

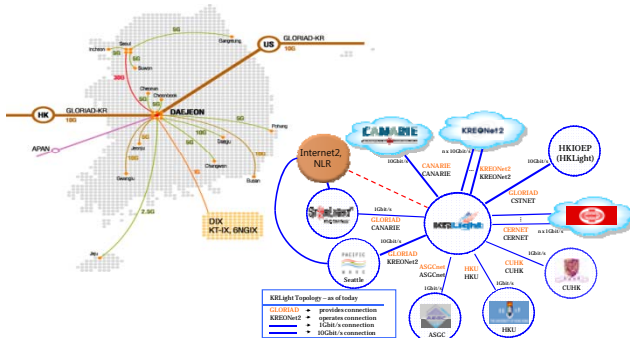
**KISTI** www.kisti.re.kr

**ETRI** www.etri.re.kr

## K-GENI, KREONET and GLORIAD

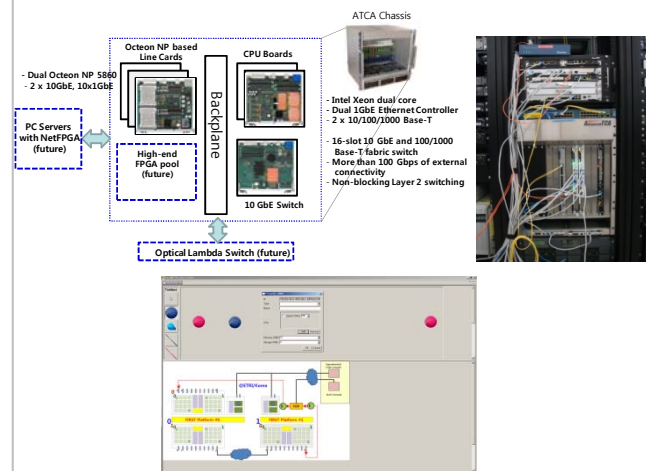
**K-GENI : Establishment of Operational Linkage between GENI and ETRI/KISTI-Korea for International Federation (GENI Spiral-2)**

- KREONET provides high performance network infrastructure for various science technologies, Supercomputing, e-Science applications.
- GLORIAD (Global Ring Network for Advanced Applications Development) is the first round-the-world high-performance networks jointly established by Korea, United States, China, Russia, Canada, the Netherlands and the 5 Nordic Countries.

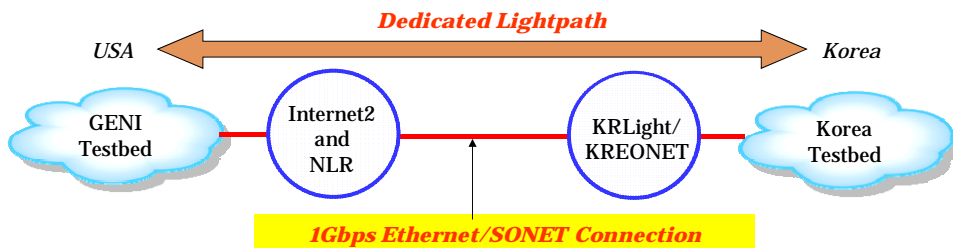


## ETRI Virtualized Programmable Platform

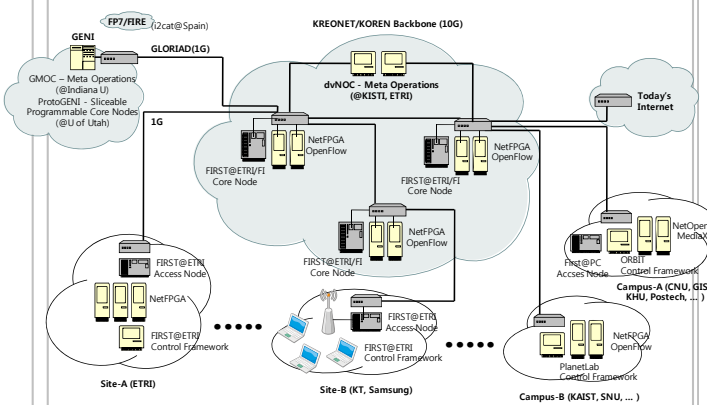
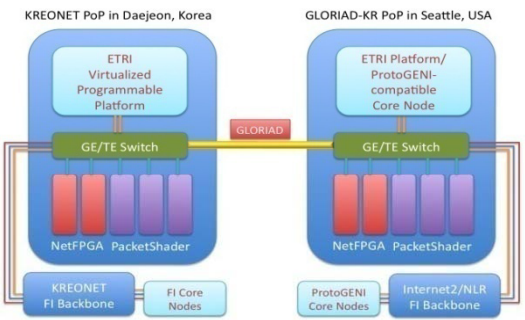
- End-to-end slice operations on our own ATCA-based, hardware platform
- ProtoGENI compatible control framework
- Allocate Rspec to sliver and link (e.g., CPU, memory, bandwidth, etc.)
- Change Rspec during operation
- **Programming APIs for researchers**
- **Common platform interface (e.g., Component Manager, Aggregate Manager, Slice Authority, etc.)**



## K-GENI (Korea - GENI Interconnection) and ETRI Platform Deployment



### FI Node Interconnections



Contact : Myung-Ki SHIN ([mkshin@etri.re.kr](mailto:mkshin@etri.re.kr)), Dongkyun KIM ([mirr@kisti.re.kr](mailto:mirr@kisti.re.kr))