

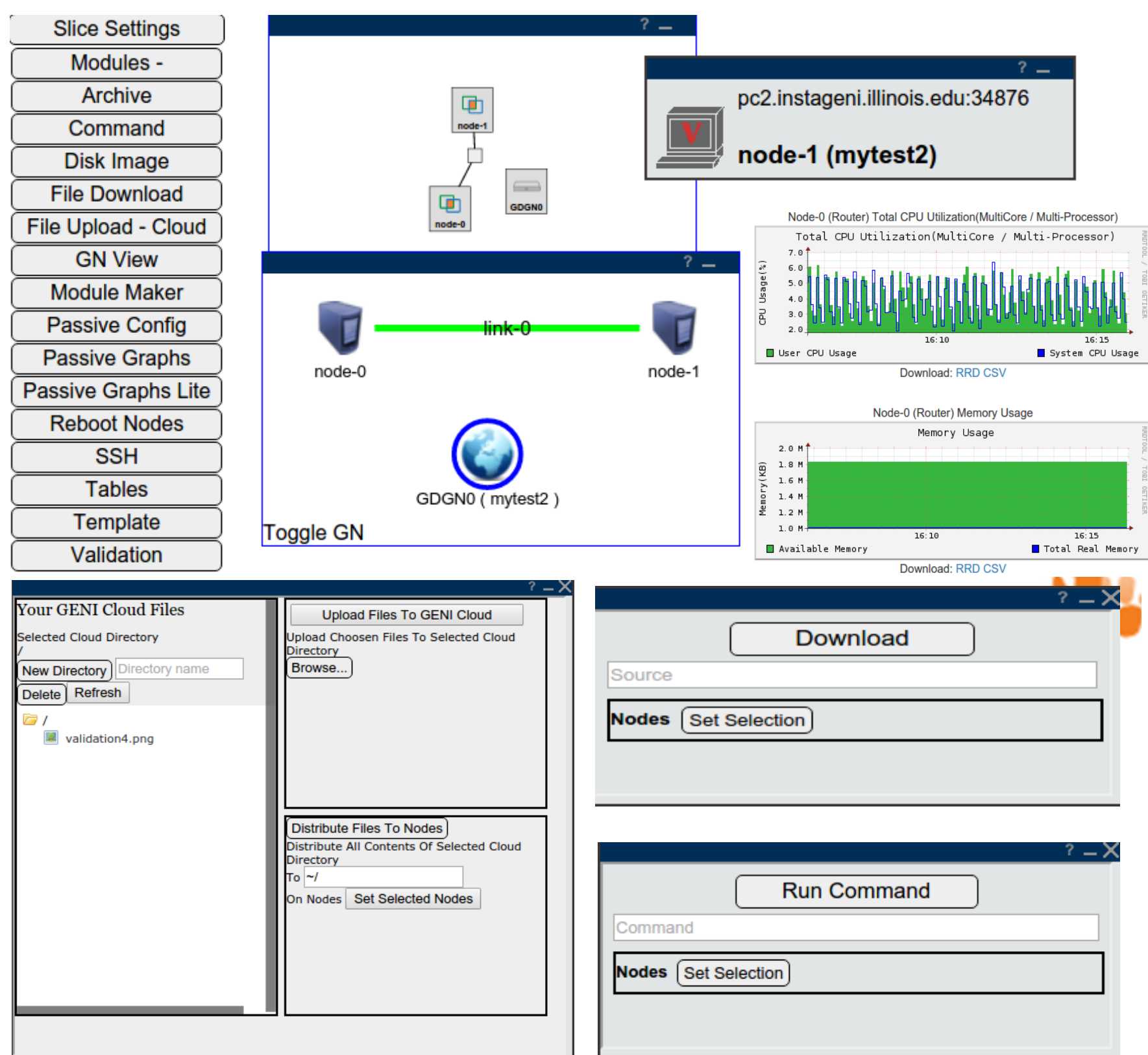
# The GENI Desktop

## A User Interface for Creating, Running, and Monitoring GENI Experiments

James Griffioen, Zongming Fei, Hussamuddin Nasir, Charles Carpenter, Xiongqi Wu, Jeremy Reed, Lowell Pike, Sergio Rivera  
(Laboratory for Advanced Networking, University of Kentucky)

### Overview

- The goal of the GENI Desktop is to make it easier for experimenters to create, control, interact with, and evaluate the performance of the resources that comprise their slice.
- The GENI Desktop provides an easy-to-use graphical user interface with windowing-system style features inside a web browser to create the look-and-feel of locally running tools (without having to actually install, manage, and run tools locally).
- Users interact with their resources using a single abstraction that involves (1) selecting resources, and (2) apply operations on those resources.



### Account and Session Management

- The GENI Desktop account management function allows users to set the default topology views, including the newly implemented JACKS view, and set the default modules for new slices.

#### GENI Desktop Account Settings

Your user name is  
Your certificate authority is **ch\_geni\_net**  
Your urn is **urn:publicid:IDN+ch.geni.net+user**  
You belong to 3 projects: **UKGENI, Uky-explore, tutorial**  
Your GENI Desktop account was created on **2013-06-07 13:36:12**

[Manage Sessions / Keys](#)

**Default Topology Views** Check which views you would like to make available by default for each slice view. Settings are saved automatically.

- Info
- List
- Cytoscape
- JACKS

**Default Modules** Check which modules you would like to make available by default for each newly created slice.

[Save Default Module Settings](#)

Use All Public Modules as Defaults for New Slices

- Public Modules**
  - Archive
  - Command
  - Disk Image
  - File Download
  - File Upload - Cloud
  - Flow Entry
  - Flow Install
  - Flow Monitor
  - GN View
  - Module Maker
  - Netflow Graphs
  - Passive Config
  - Passive Graphs
  - Passive Graphs Lite
  - Reboot Nodes
  - SSH
  - Tables
  - Template
  - Validation
- User Modules**

- The session management function improves the security by ensuring the user credential is stored and valid only for the current session established with the GENI Desktop server.

### Manage your GENI Desktop Sessions

In order to use the GENI Desktop you must authorize it to act on your behalf. The credential that you sign is stored in a session. This allows for easy access to the full GENI Desktop functionality.

Sessions are set to expire when the first of these occurs:

- The Speaks-for certificate expires, or
- You Log Out/Terminate the session, or
- No communication with the server has taken place within the Touched Timeout timespan. The Slice List and Slice View pages will keep the session active as long as they are open.

Default touch timeout for new sessions is

#### Current Session You Are Logged On

Session Id	bb0abccb27e675960c91c554a1e3c745
IP	128.163.140.221
User Agent	Mozilla/5.0 (X11; Linux x86_64) AppleWebKit/537.36 (KHTML, like Gecko) Chrome/48.0.2564.116 Safari/537.36
Created	2016-02-26 14:22:24
Last Touched	2016-02-26 20:02:33
Touched Timeout	1 Hour
Expires	2016-06-25T14:22:23Z
Speaks-for Expires	2016-06-25T14:22:23Z

[Download Key](#) [Terminate Session](#)

### The GENI Desktop Archive Service

- The GENI Desktop allows users to archive measurement data to the GENI iRods server for future use.
- To recreate the live experience when a user retrieves and views the archived data, the GENI Desktop provides a Virtualbox VM for the user to download and view all archived data.

