



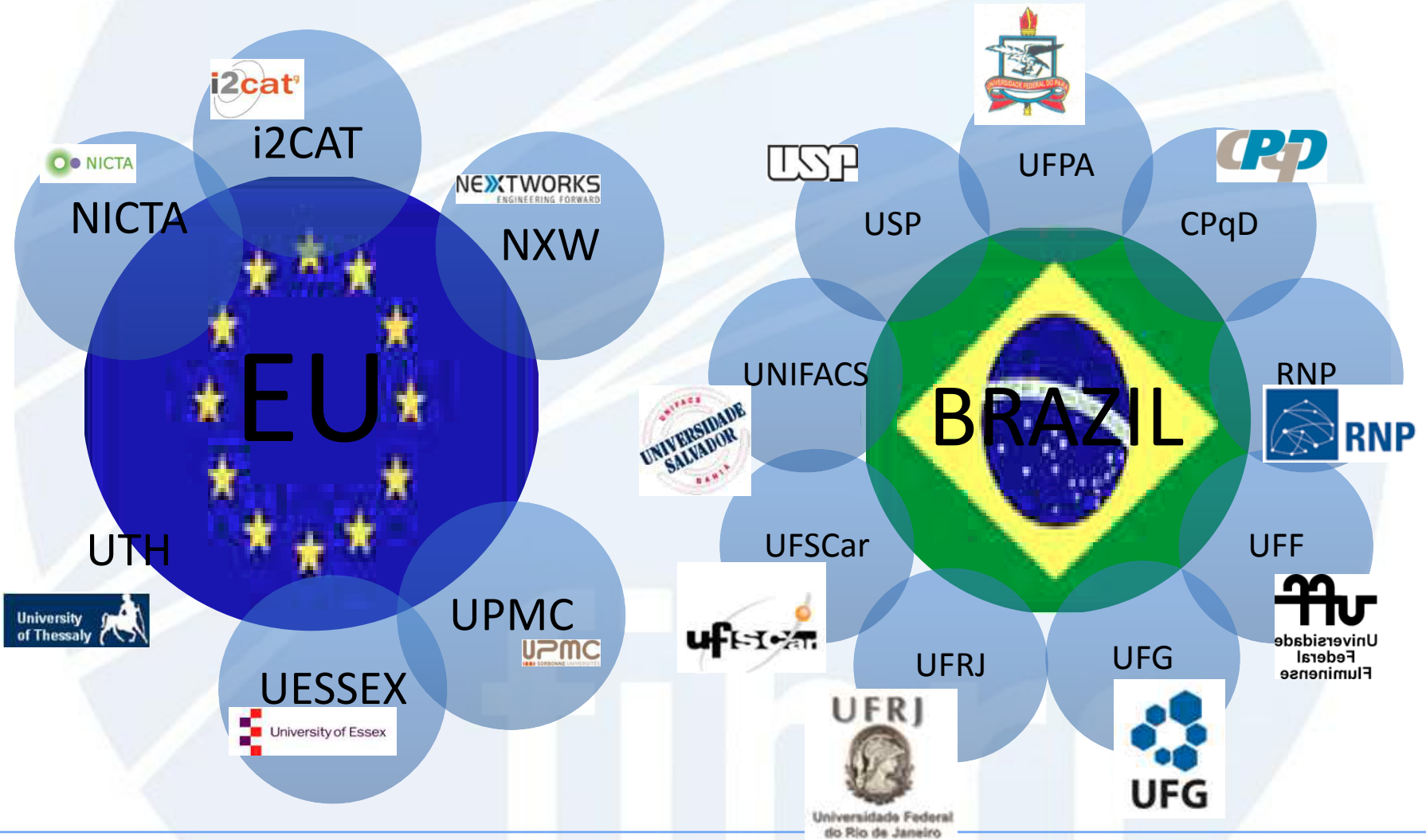
# **FIBRE-BR – People, Resources , Roadmap CNPq / FP7**

Presenter: Cesar Marcondes  
Federal University of Sao Carlos (UFSCar)

GENI GEC 14 International Federation



# Partners



- Goal: Create FIBRE-BR testbed



Research networks and site locations

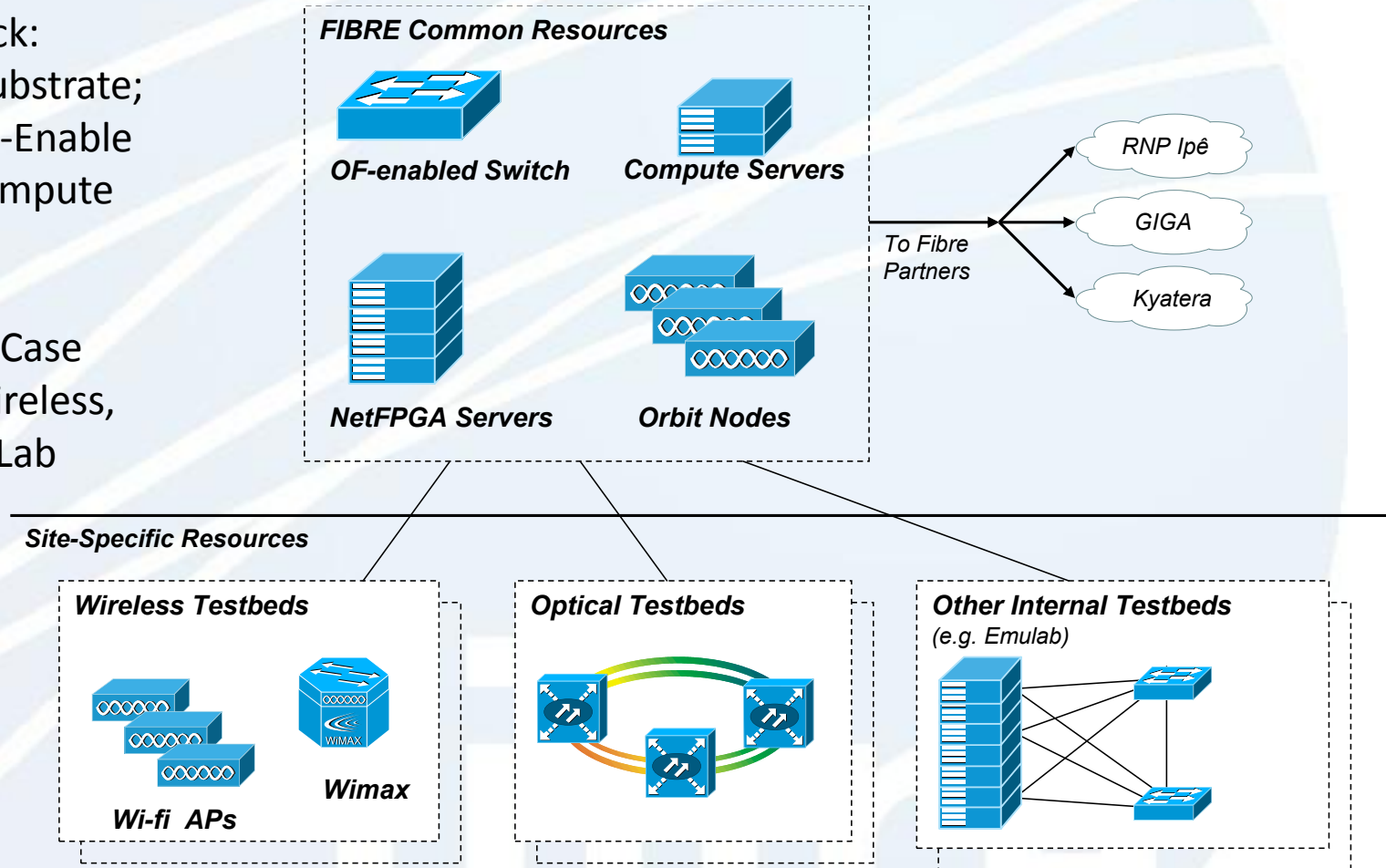


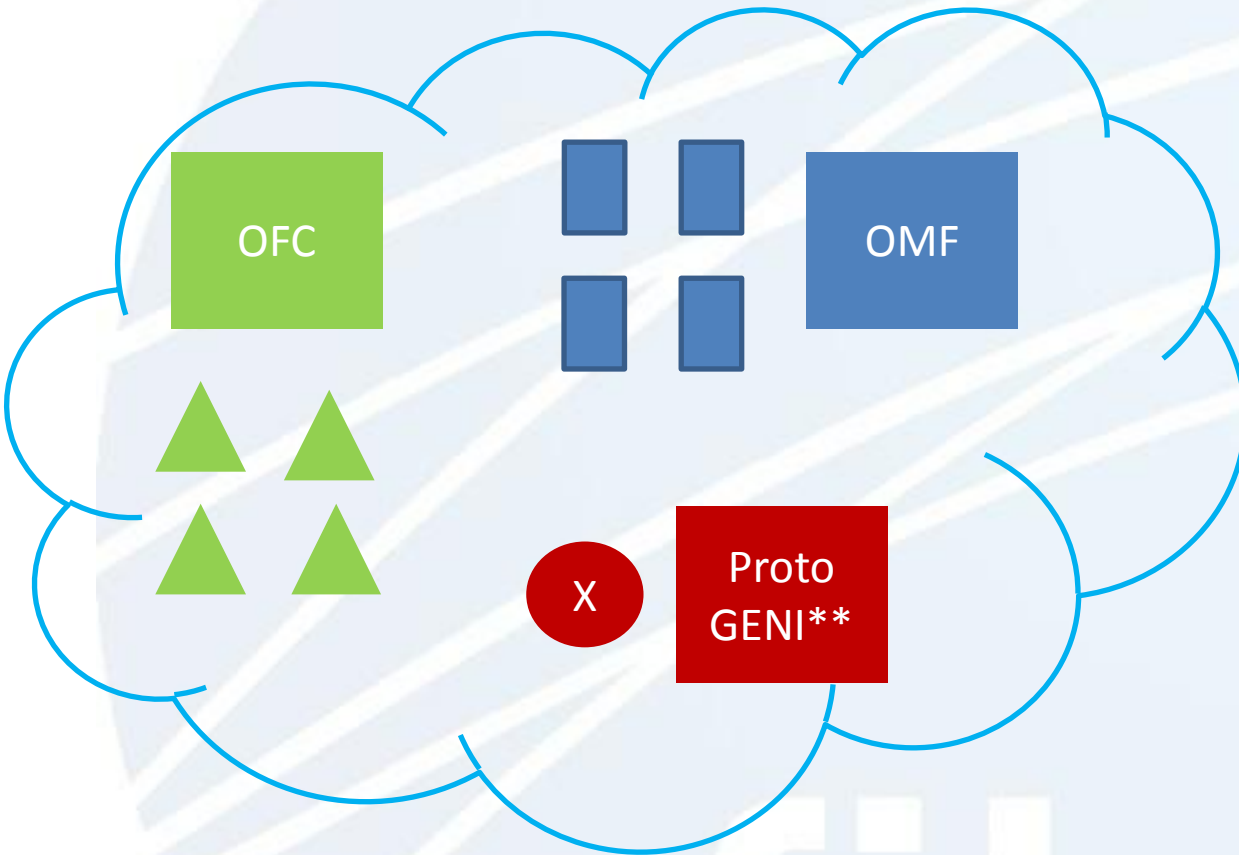
Expected topology of interconnecting private L2 network and alternatives for BR-EU link



FIBRE-BR Rack:  
OpenFlow Substrate;  
netFPGA, OF-Enable  
Switches, Compute  
Resources

Specific Use-Case  
Resources: wireless,  
optical, EmuLab  
(USP), ...





- Brazilian Testbed overall:
- 78 ORBITS nodes
  - **10 servers**
  - **27 OF NetFPGA**
  - 10 OF sw commercial
  - 1 Emulab cluster
- Each Institution
- 8 to 18 ORBITS nodes
  - **3 NetFPGA**
  - 1 OF SW commercial
  - **1 server**

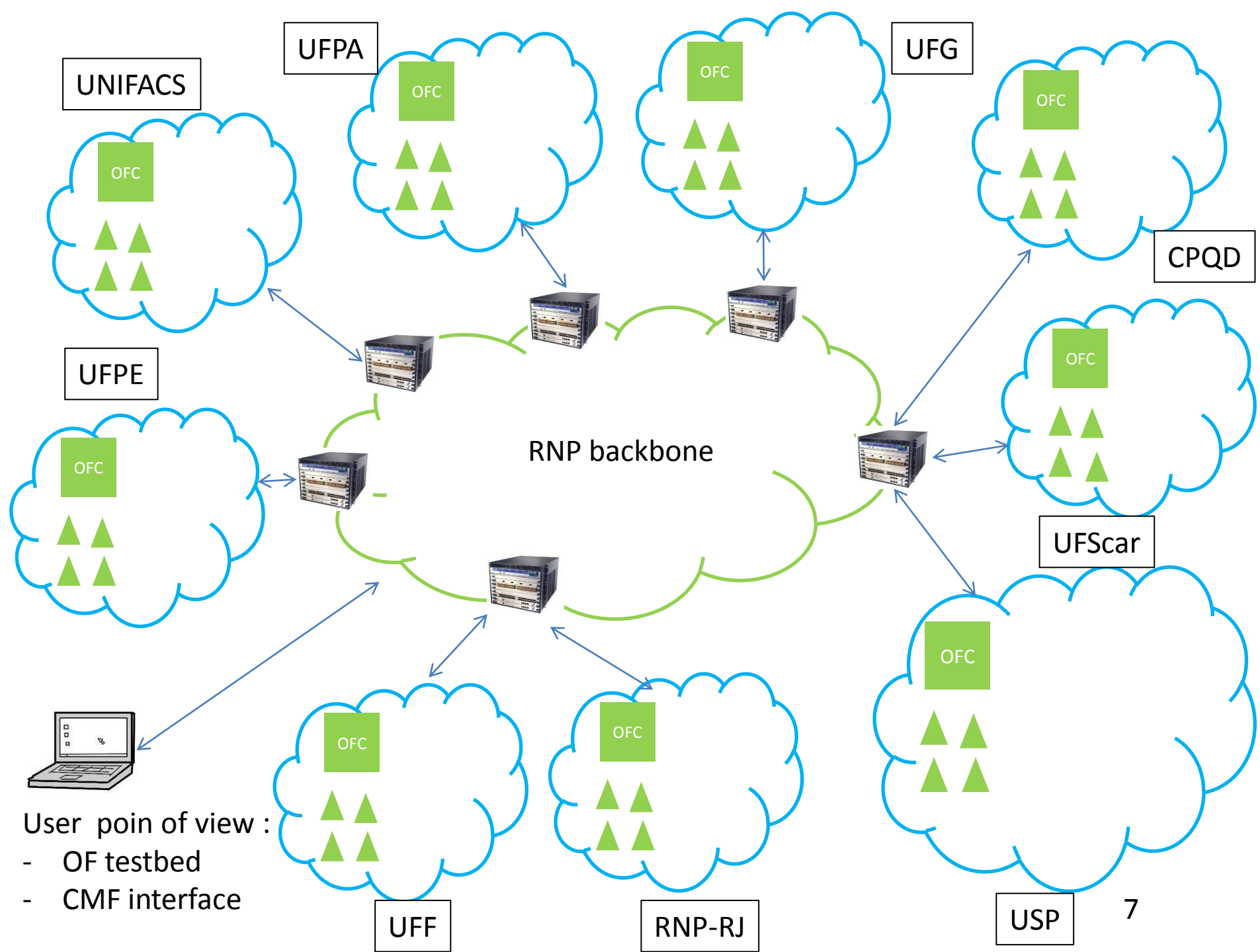
Institution X  
(\*\*) USP

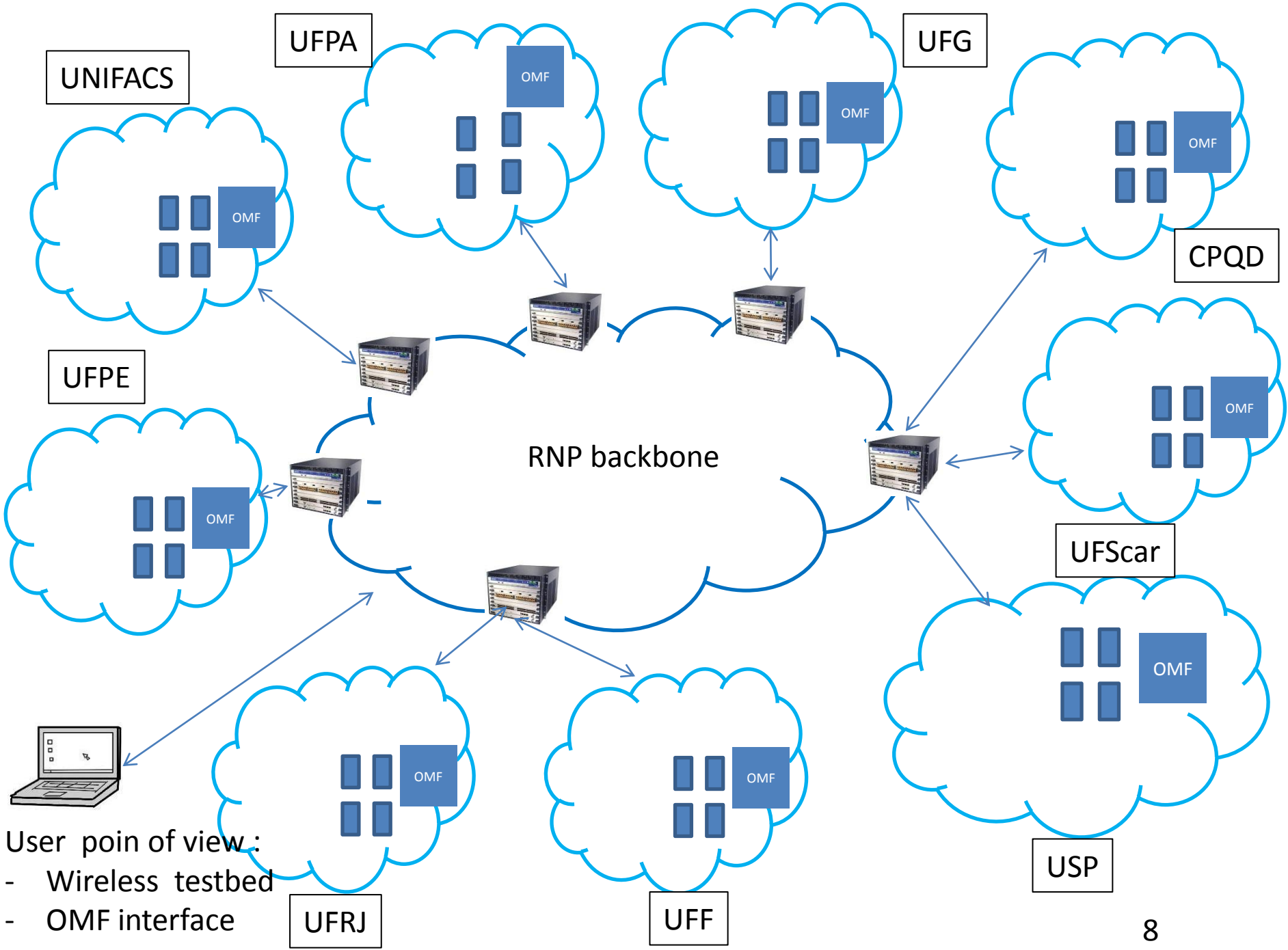
OFC = OFELIA CONTROL FRAMEWORK



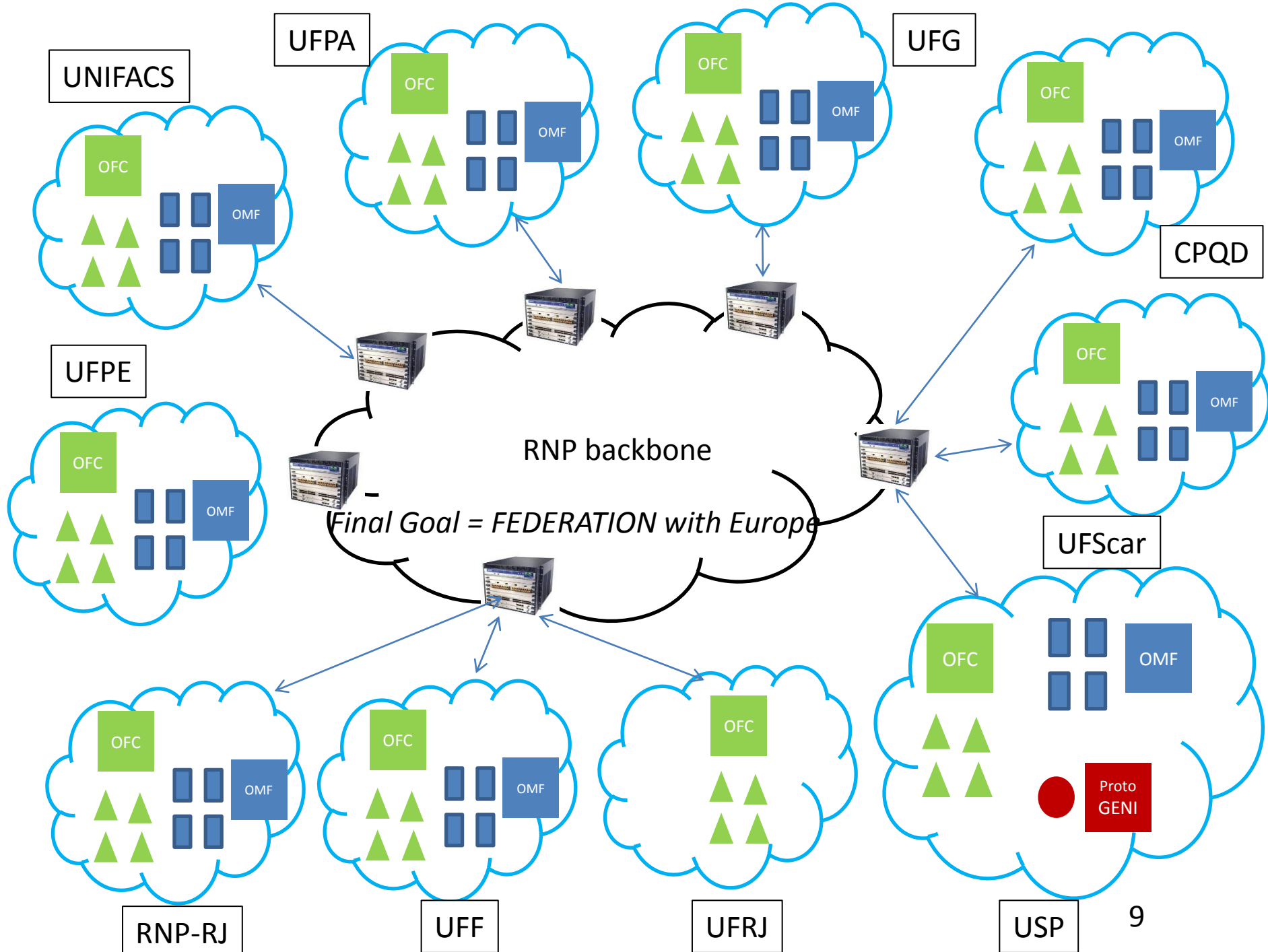
## Roadmap - 2012

fibre

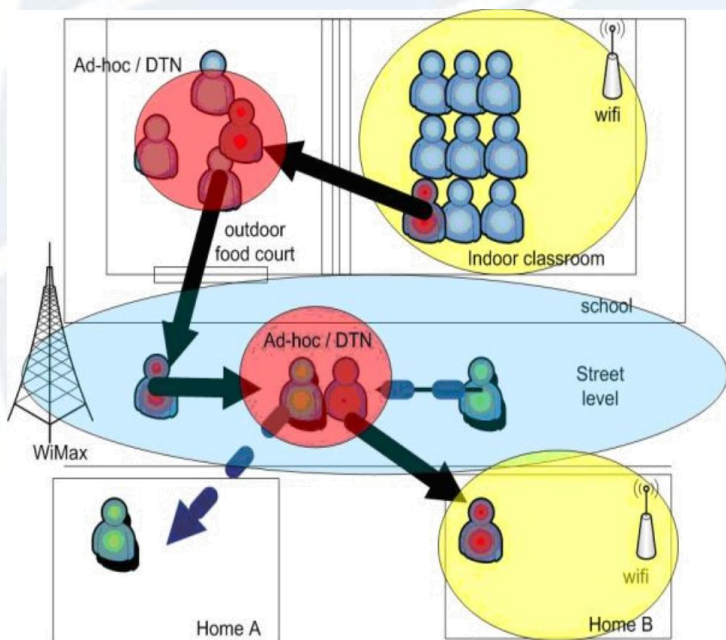




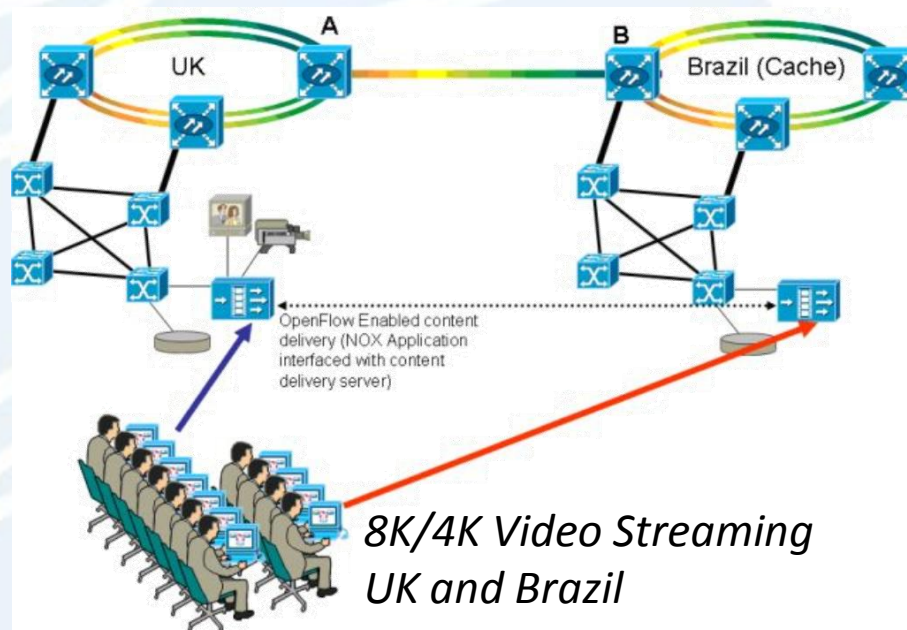




## Seamless Mobility for Educational Laptops



Seamless Mobility and DTN Experimental Testbed (Students' Laptops)



- High definition content delivery across different sites
- Bandwidth on Demand through OpenFlow GMPLS in the FIBRE facility



- FIBRE-BR starting federation from beginning, engage in different CMFs and integration
  - Large Distances in Brazil
  - Key role from research partners in OpenFlow and Wireless Technologies (RouteFlow, etc.)
- Federation is not only about technology?
- How to discuss the policies in a common language? Slice Policy API?

Obrigado

Future Internet Testbeds Experimentation  
Between Brazil and Europe

<http://www.fibre-ict.eu>

fibre