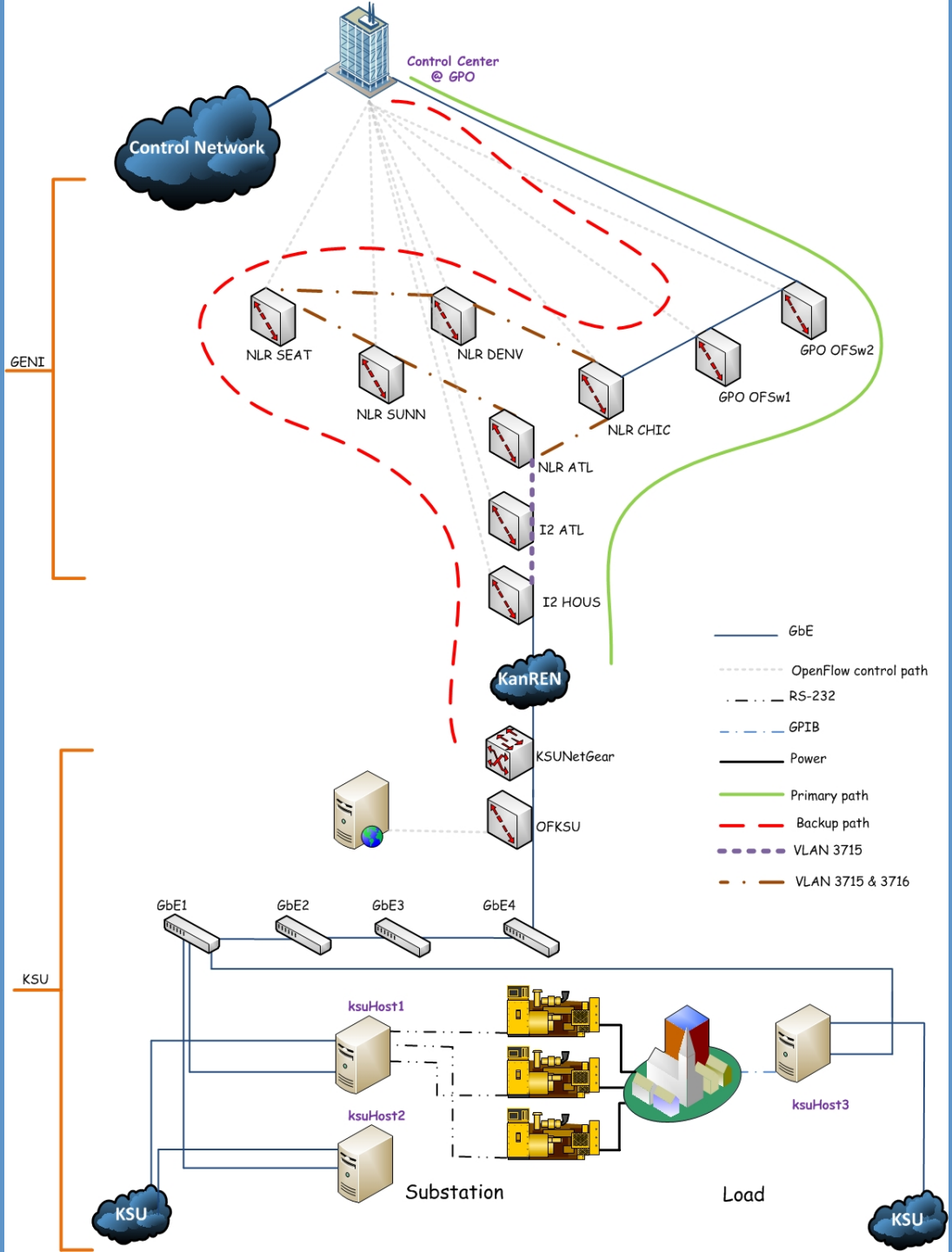
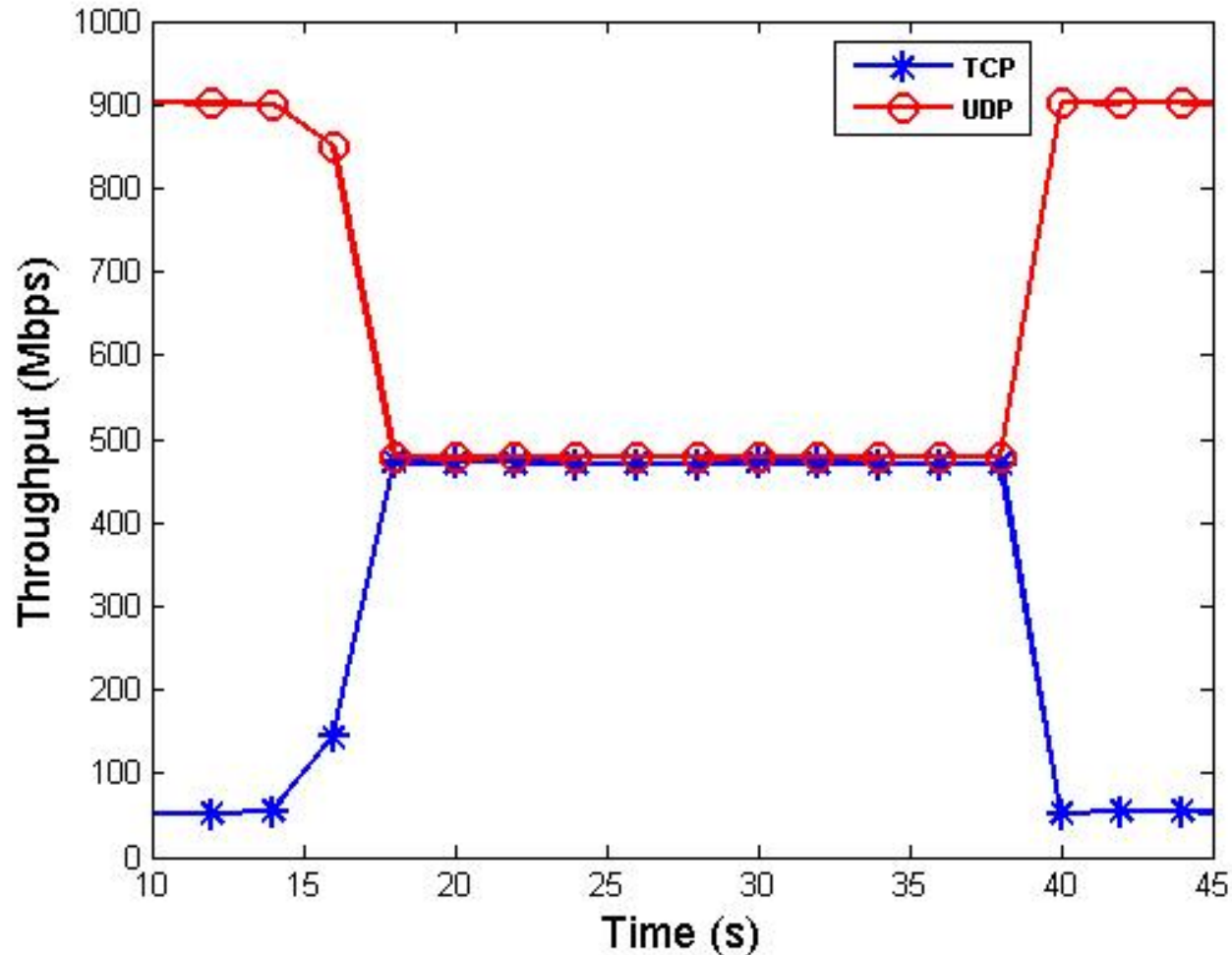


Software Defined Networking In GENI: Using OpenFlow to Support Cyber Physical System Traffic

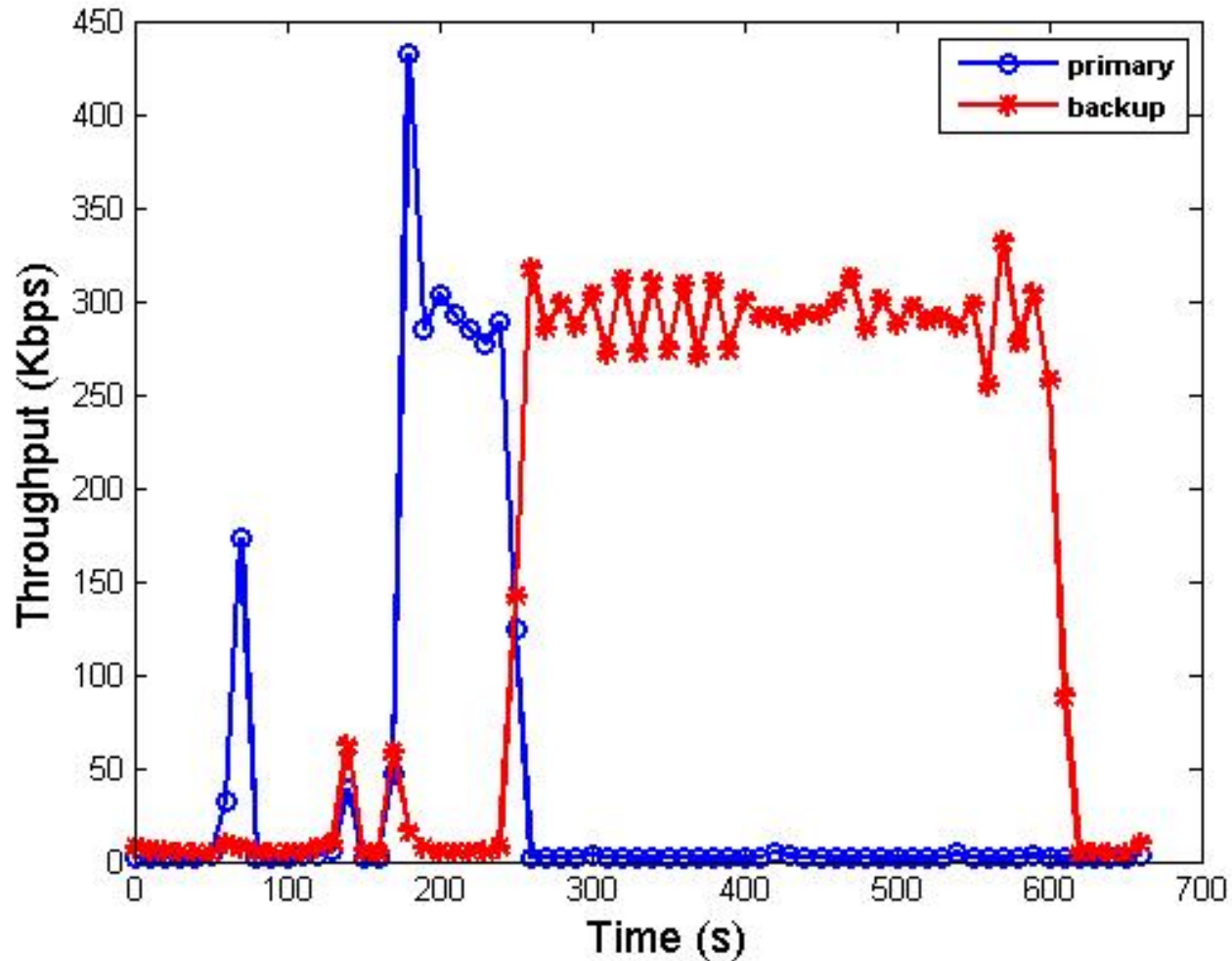
Ali Sydney, Caterina Scoglio, Don Gruenbacher, & David S. Ochs
Electrical and Computer Engineering
Kansas State University



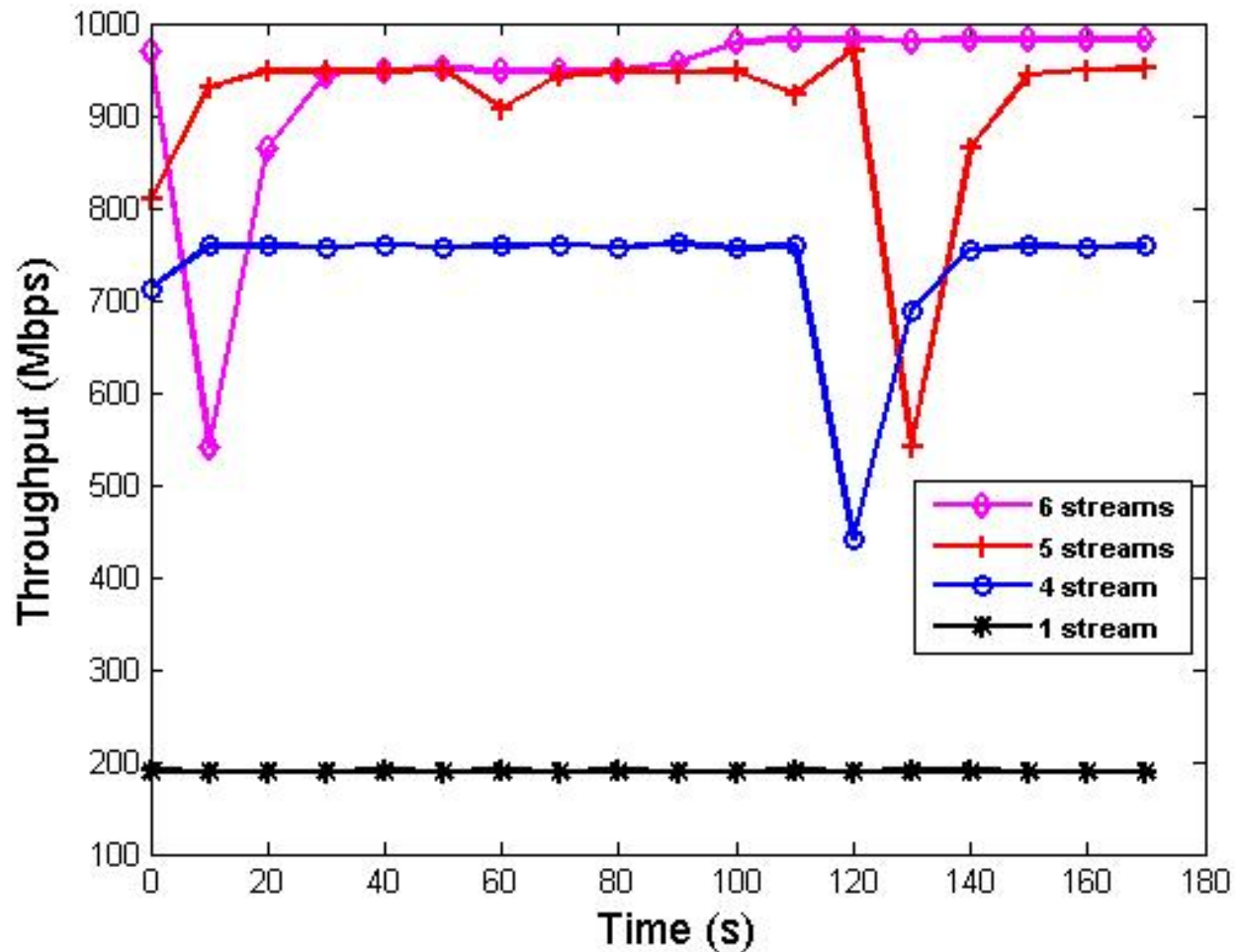
Maxrate Queuing: Pronto 3290



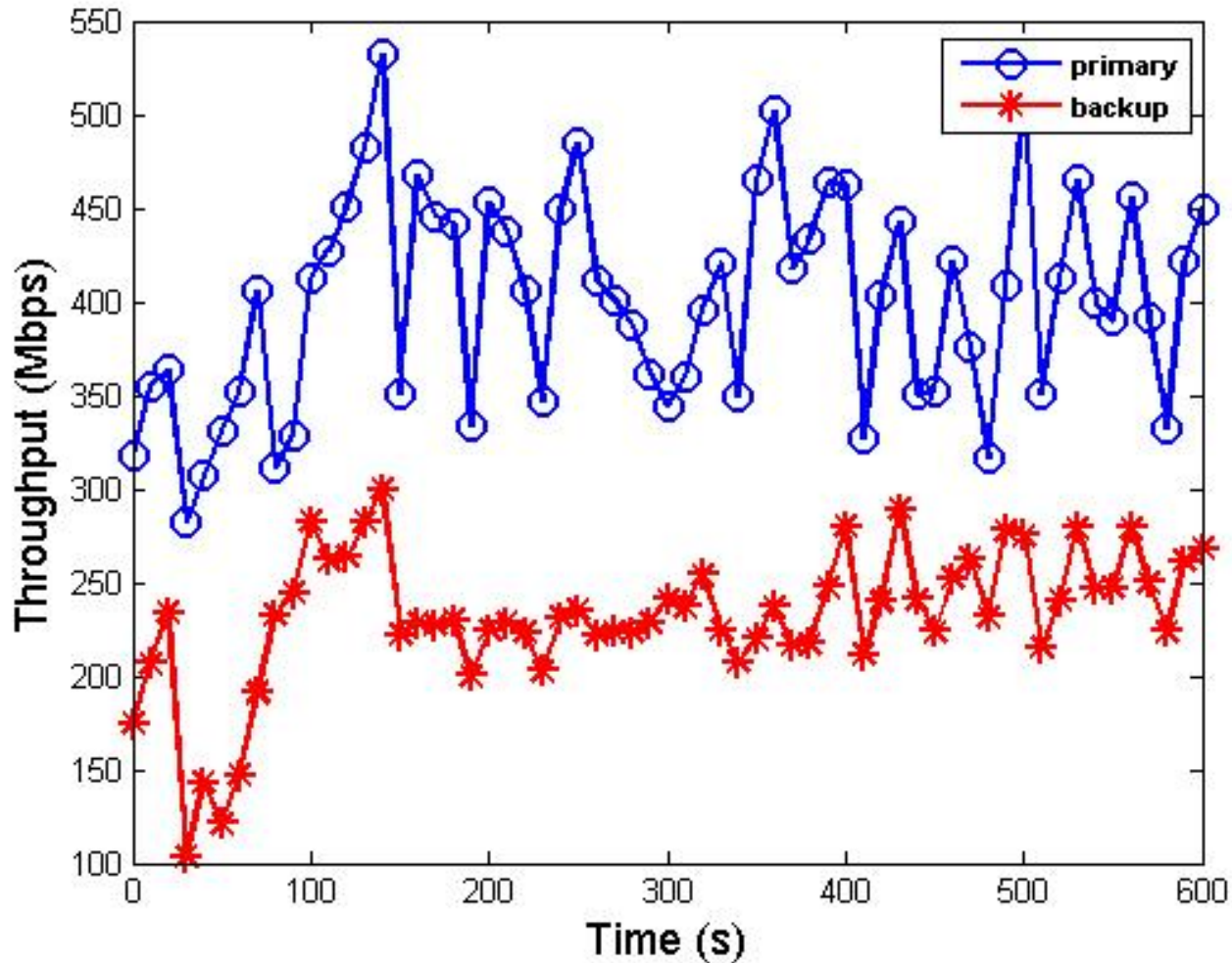
Automatic Failover



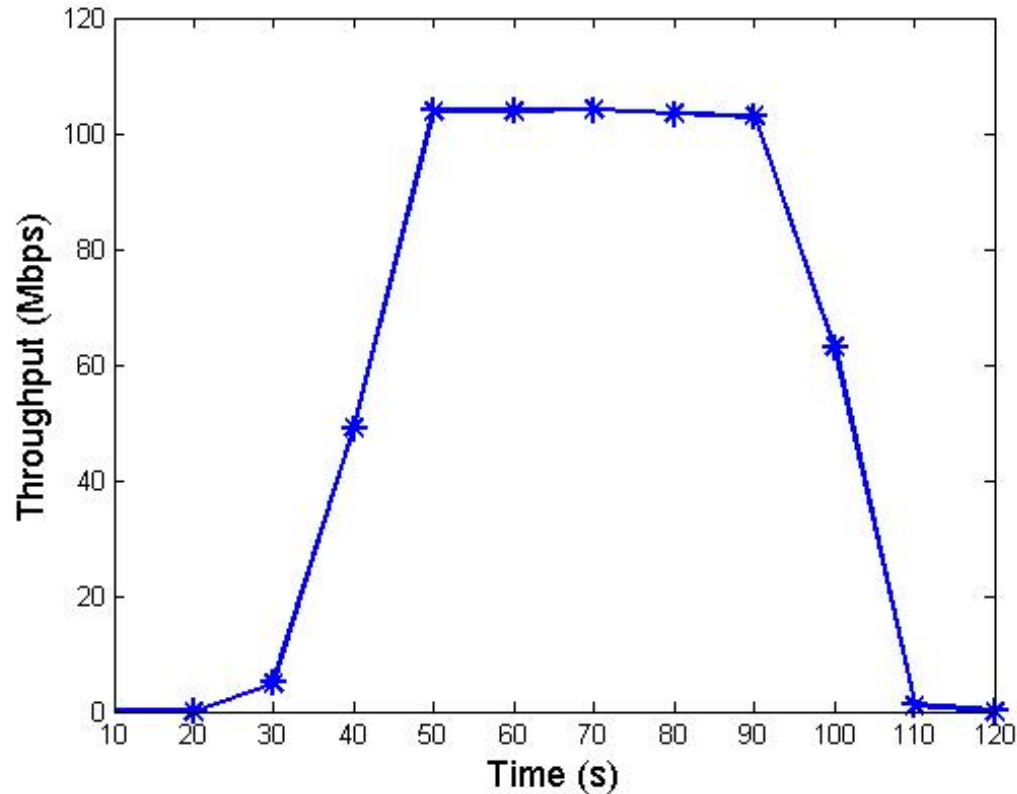
High Throughput Tests: TCP



Load Balancing



Issues & Perspectives: UDP



00034 | openflow | WARN:stream: connection closed by peer
00035 | nox | WARN:stream: connection closed by peer

Issues & Perspectives

- Support for consistent set of “rewriting” actions in HP, NEC, and Pronto Switches, in the hardware path: e.g. Mac addresses
- Unable to use pool 2 of Differentiated Services Code Point (DSCP) as defined by RFC 2474
- Access to MPLS Network gear for performance evaluation?
- #geni-openflow

Questions, Comments, Suggestions?

