

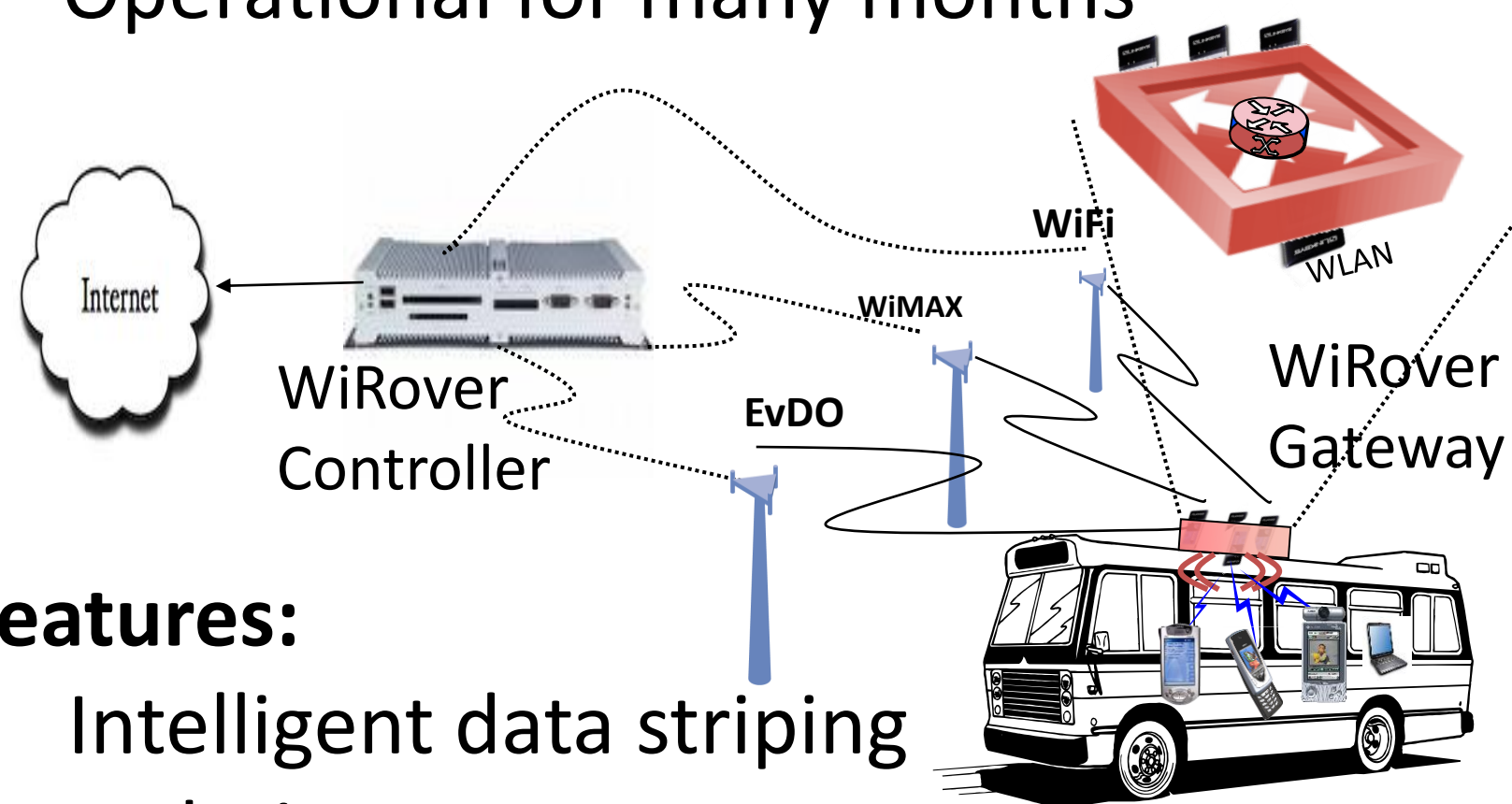
Continuous Vehicular Connectivity through Multiple Wide-area Interfaces

Joshua Hare, Lance Hartung, Wes Miller, Derek Meyer, Suman Banerjee
Wisconsin Wireless and NetworkinG Systems (WiNGS) Laboratory, UW-Madison



WiROVER

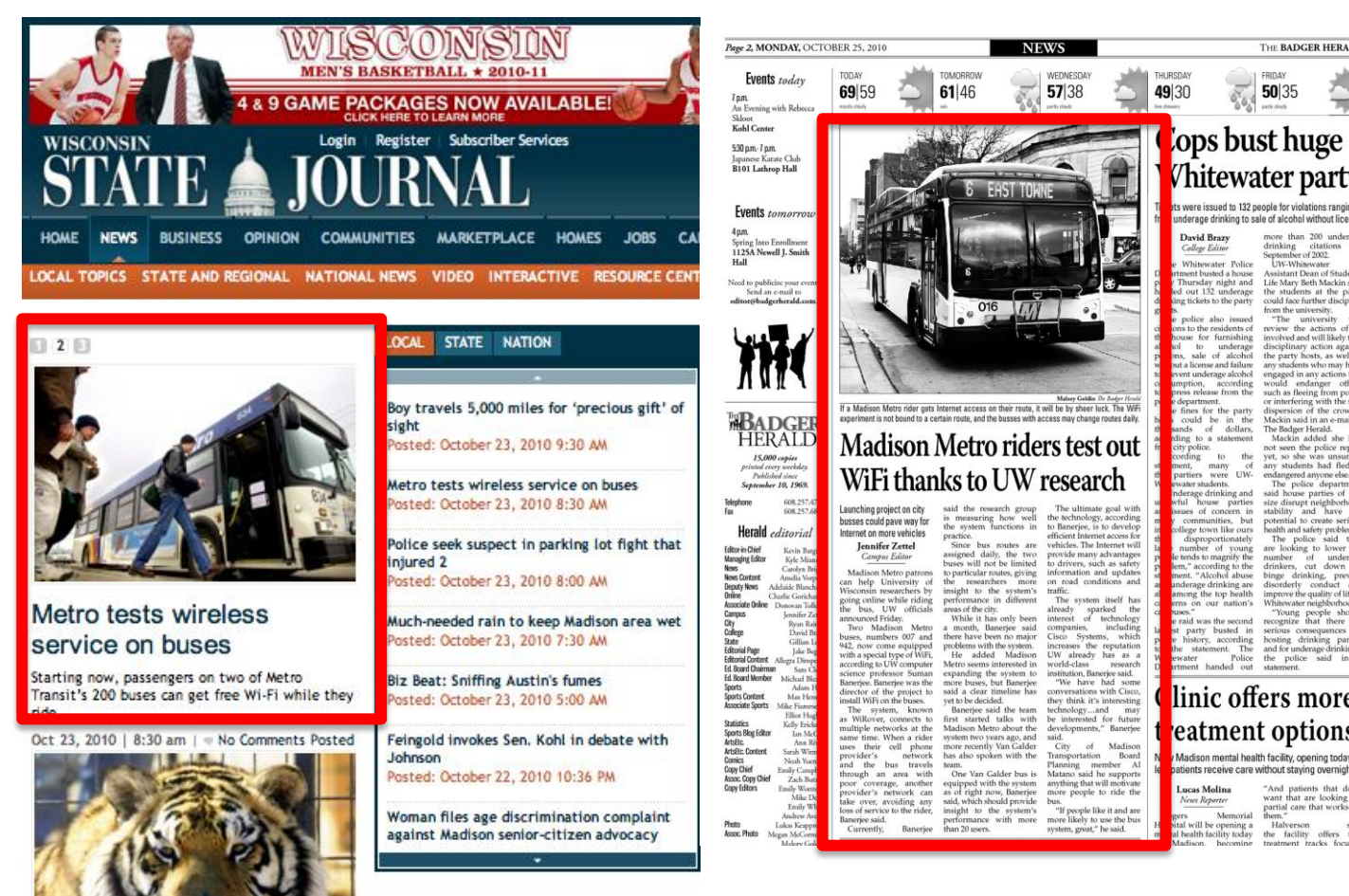
- A vehicular system to provide Internet access to riders
- Currently deployed on multiple Madison Metro Transit buses and a single Van Galder (CoachUSA) bus
- Operational for many months



Features:

- Intelligent data stripping techniques
- Automated management tools to collect system, link, and user data
- Aggregate data collection exceed 2 million data points per month

IMPACT

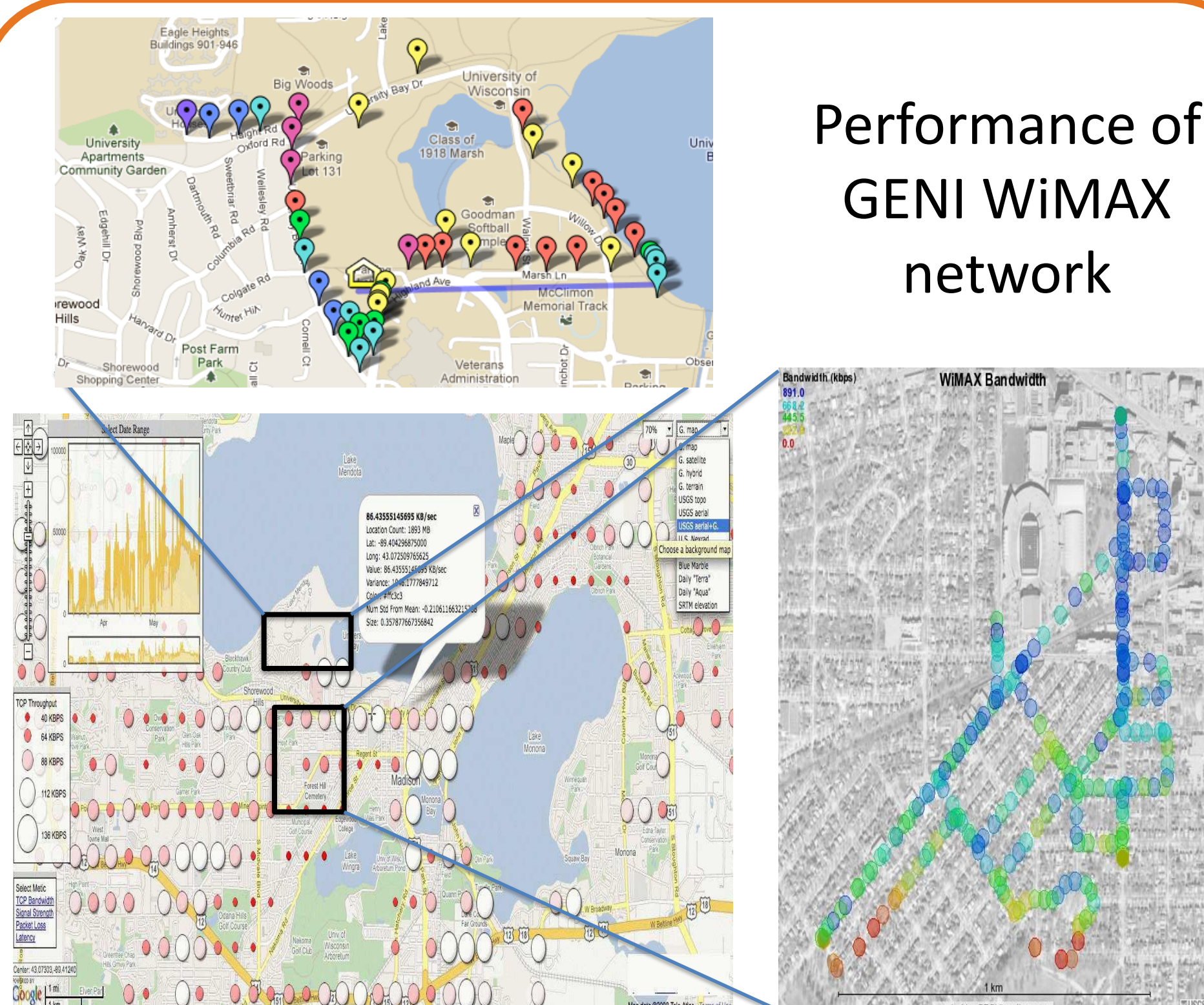


"Thank you!! I really hope this is permanent and gets installed on more buses. I test was able to get work done at an otherwise lame point of my day. Thanks again!"
 --- WiOver user comment

6 hrs, 30 users, 609 MB

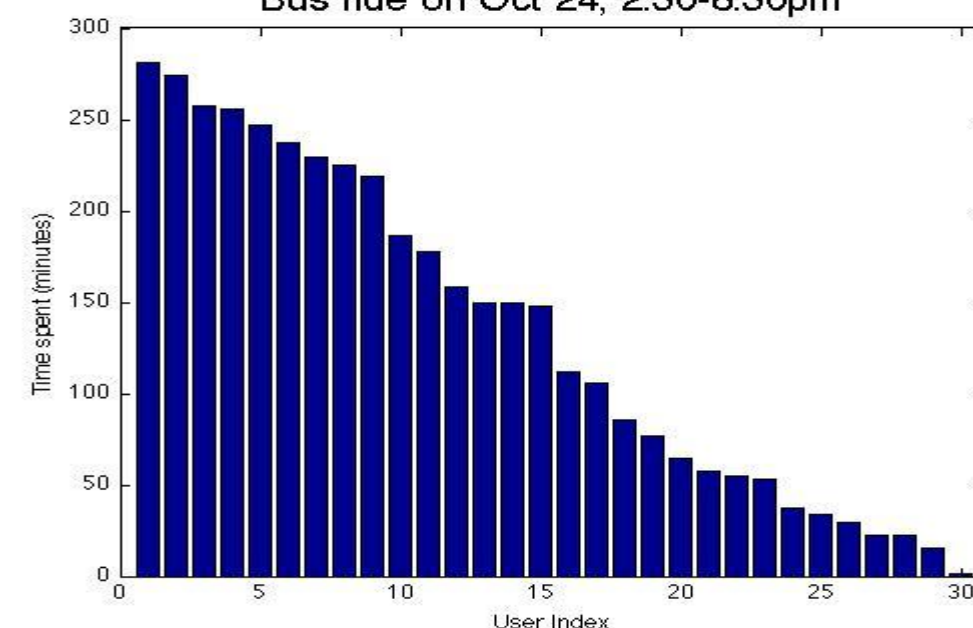
OBSERVING WIDE-AREA NETWORK BEHAVIOR

Performance of GENI WiMAX network

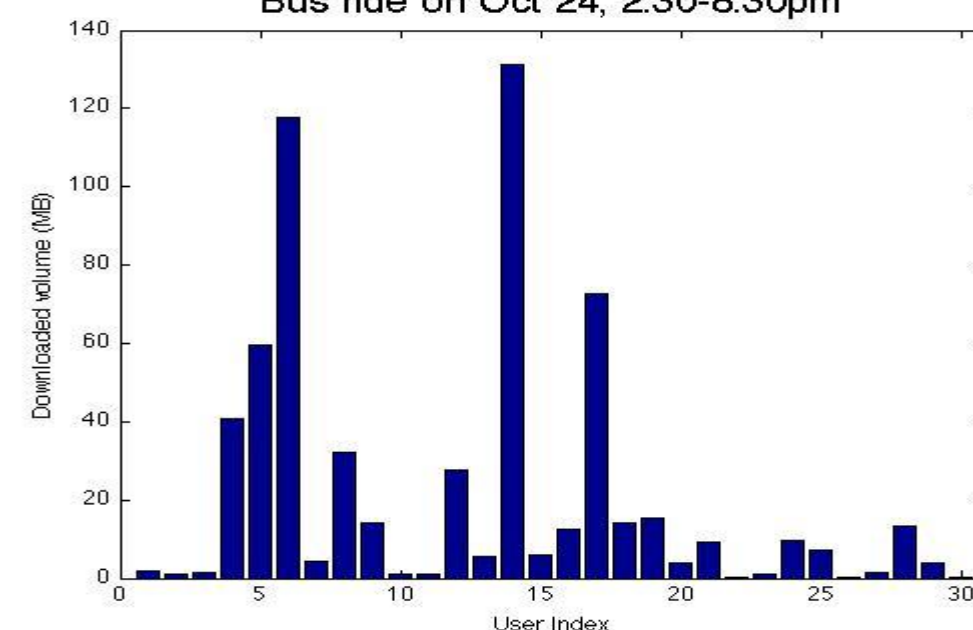


Performance of cellular network 1 (~ 60. sq. miles)

Bus ride on Oct 24, 2:30-8:30pm



Bus ride on Oct 24, 2:30-8:30pm



Bus ride on Oct 24, 2:30-8:30pm

