



# PROBE

Parallel Reconfigurable  
Observational Environment

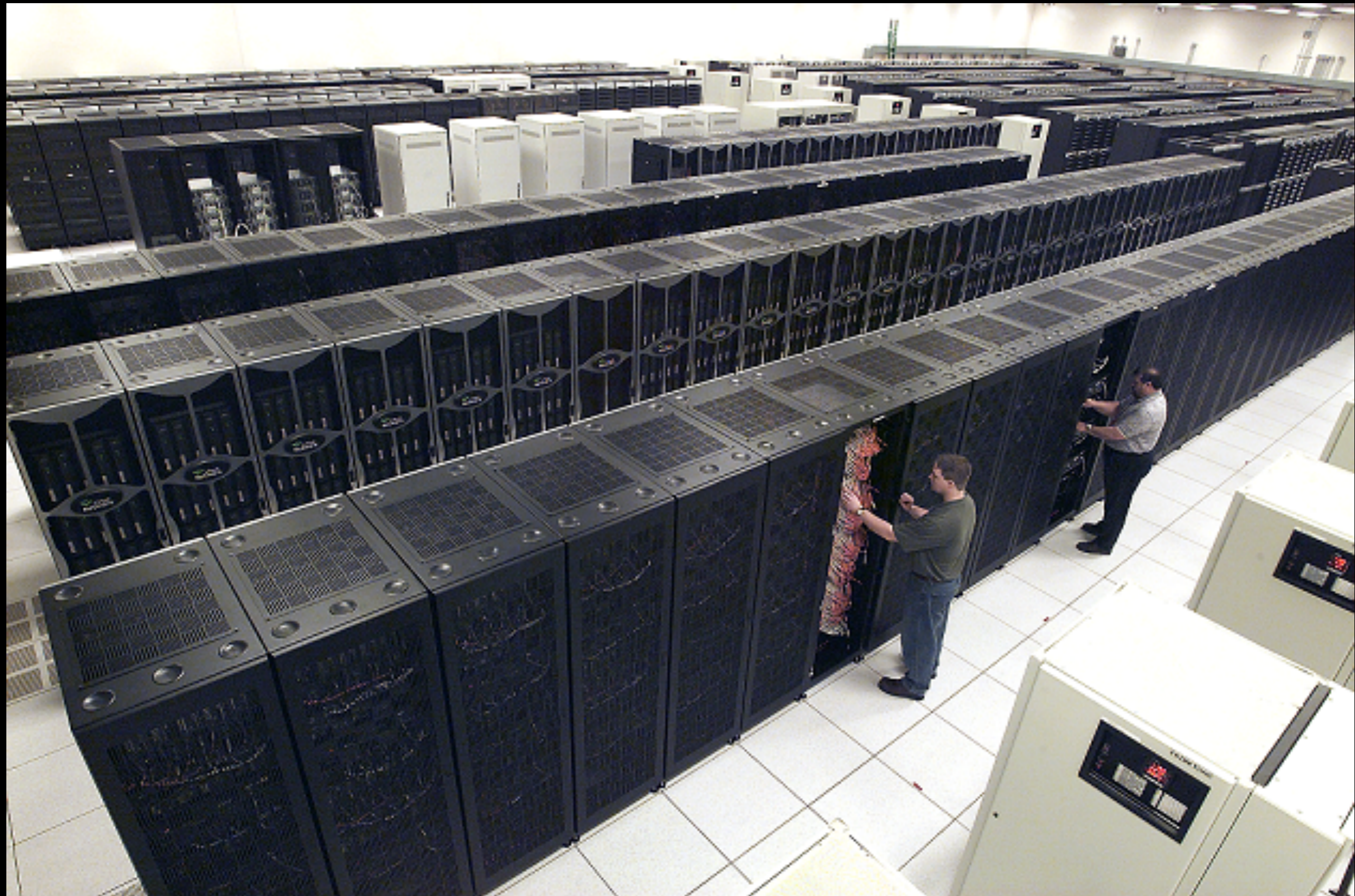
Robert Ricci  
GEC 13, March 2012

Put thousands of bare-metal machines in the hands  
of networking and systems researchers



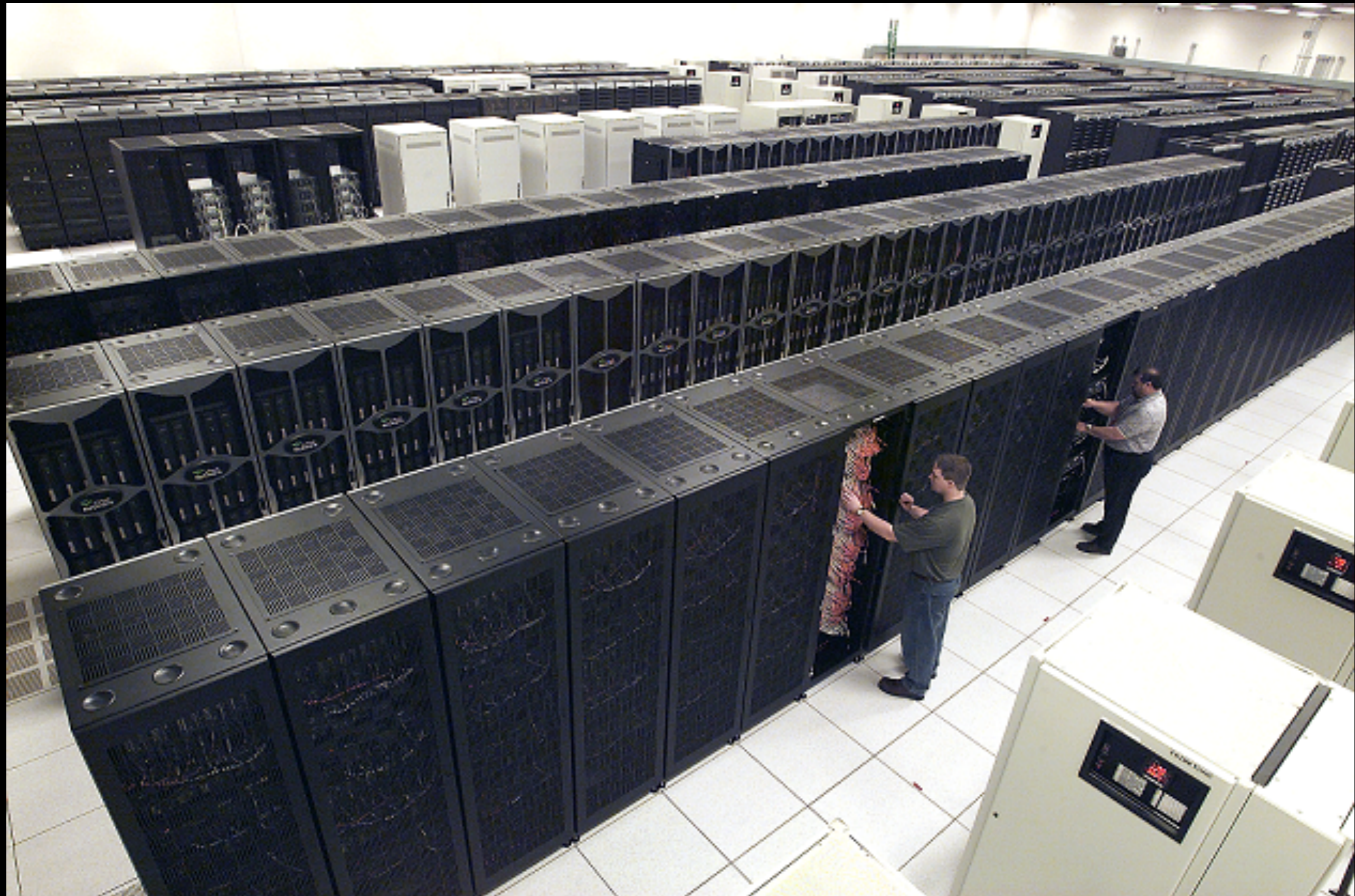
**Carnegie Mellon**







3452-N67





# PRObE Usage Model

- Specifically target research that needs
  - A very large cluster
  - Exclusive, low-level access
  - For days or weeks
- Emulate failure scenarios



## NFS's “who can apply” rules

Includes international and corporate research  
(partnership with US university recommended)

### PRObE Target Communities

```
graph TD; A[PRObE Target Communities] --> B[High End Computing (HEC) Systems Community]; A --> C[HEC and DC Storage Systems Community]; A --> D[Data intensive Computing (DC) Systems Community]; B --- B1[Supercomputing Conference]; C --- C1[FAST Conference]; D --- D1[SOSP/OSDI/NSDI Conference];
```

**High End Computing  
(HEC) Systems  
Community**  
Supercomputing  
Conference

**HEC and DC Storage  
Systems Community**  
FAST Conference

**Data intensive  
Computing (DC)  
Systems Community**  
SOSP/OSDI/NSDI  
Conference

# marmot.pdl.cmu.edu

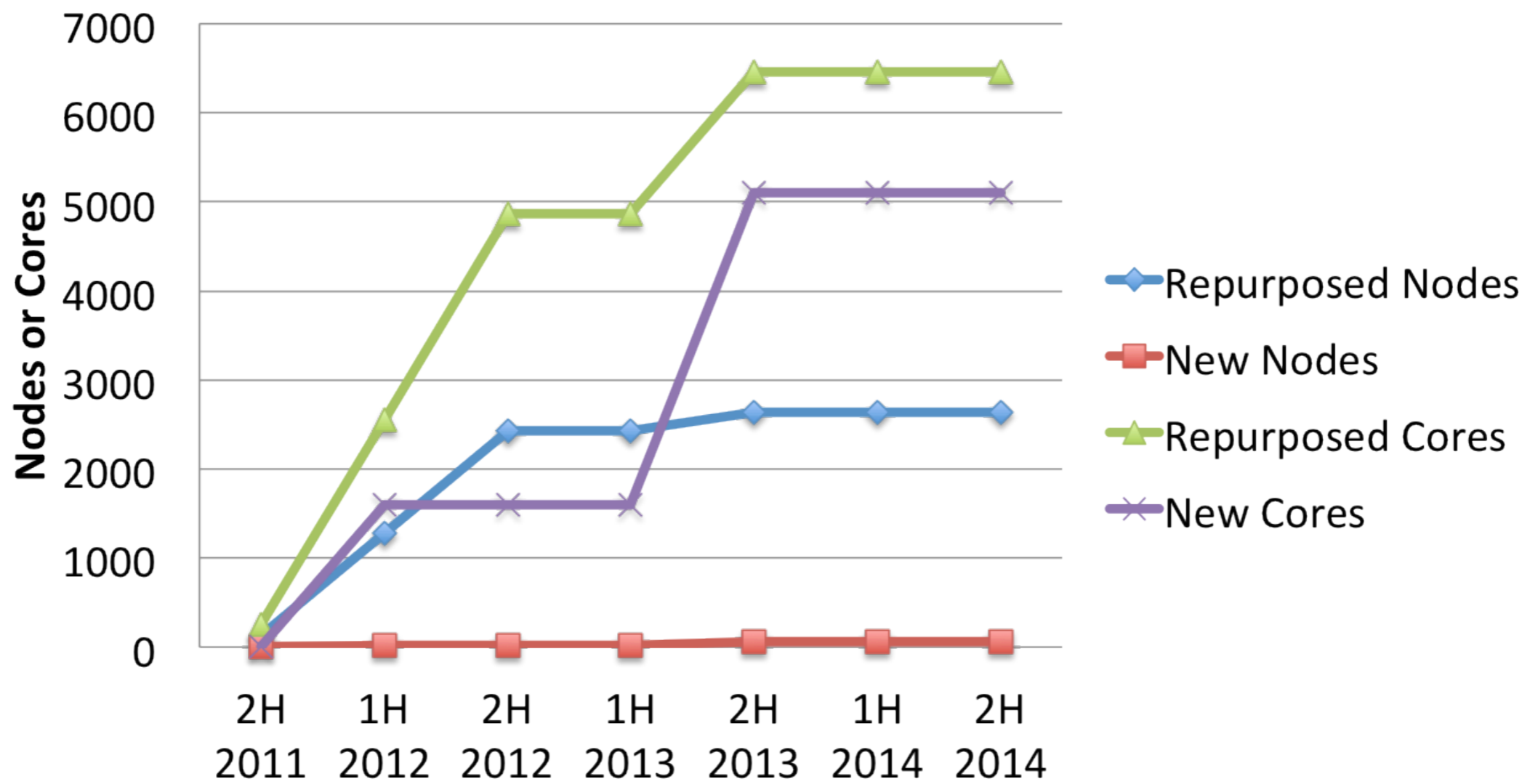


- Initial 128 node cluster at CMU (Marmot)
- Infiniband, dual Ethernet, 2TB drive / node

**Next cluster: 1,000 nodes, Ethernet and Infiniband**

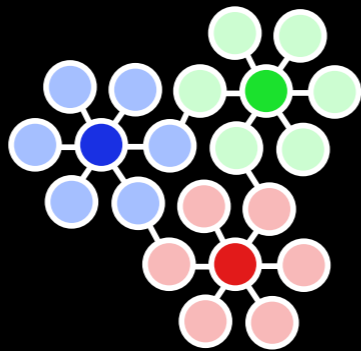


**Target Availability Date: April 1**



# PRObE and GENI

- “Volunteer” federation with GENI
- Providing several aggregates
- Its own set of allocation and vetting policies
- Considering connections through ESNET



emulab



protogeni



# PRObE

Parallel Reconfigurable  
Observational Environment

[www.newmexicoconsortium.org/probe](http://www.newmexicoconsortium.org/probe)

[probe@newmexicoconsortium.org](mailto:probe@newmexicoconsortium.org)

## **Management Group:**

Andree Jacobson (NMC)  
Garth Gibson (CMU)  
Gary Grider (LANL)  
Robert Ricci (Utah)

## **Steering Committee:**

Steve Gribble (UW)  
Robbert van Renesse (Cornell)  
Rob Ross (Argonne)  
Karsten Schwan (GaTech)  
Margo Seltzer (Harvard)  
John Wilkes (Google)