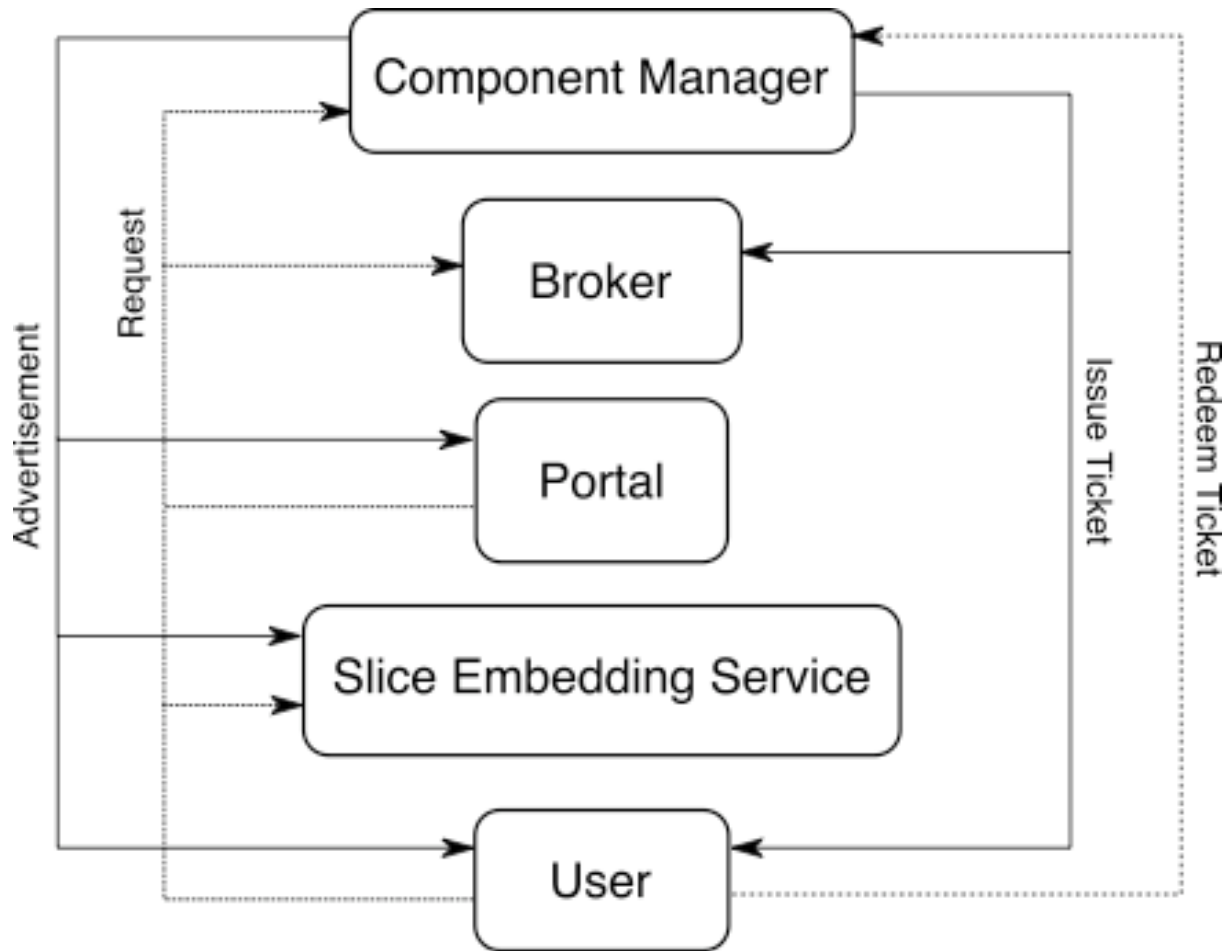


What Is RSpec For?

- Common language for describing resources
 - Advertising
 - Requesting
 - Promising (ticket)
 - Making a promise
 - Calling in that promise

How RSpec Fits Into the Architecture



Principles of RSpec Design

- Standardized Core Schema and Extensibility
 - Expect new resources
 - Individual communities
- Resource Naming
 - Resources get unique IDs
- Composability
 - Flexible discovery
 - Service composability

What the *Core* RSpec Does and Does Not Contain

- Included: Allocatable Resources
- Included: Constraints Between Resources
- Included: Resource Availability
- Included: Network Link Descriptions
- Included: Execution Environment
- Not Included: Allocation Policies
- Not Included: Ephemeral Operational State
- Not Included: Resource Costs