

- GENI wiki
 - Pages for **Instructors** and **Experimenters**

<http://groups.geni.net/geni/wiki>



Welcome to the GENI Wiki

The GENI Wiki is a repository of information related to the GENI design and the [GENI Project Office \(GPO\)](#)-led design process. For the GENI web page, visit <http://www.geni.net>.

Editing this Wiki: See [GeniWikiGettingStarted](#) for information on how to post and for site-wide conventions.

Table of Contents
Welcome to the GENI Wiki
Finding Information in this Wiki
Connecting with the GENI Community
Meetings & Events
GENI Resource Map

Finding Information in this Wiki

For information on **GENI Racks**, see [GENIRacksHome](#).

Information for GENI Constituencies



Newcomers to GENI



Experimenters



Instructors



Opt-in Users



GENI Aggregate Providers including GENI Campus Operators



GENI Operations



GENI Developers



GENI Project Office (GPO)



Related Projects

Other Ways of Finding Information

Tip: Try searching the [page title index](#) to find wiki page(s) with the information you need.

If you cannot find the information you need, email help@geni.net.



- Listed under the “Experimenters” section
- Each “How To” is a short descriptions of how to do various tasks
- New entries being added all the time

Using GENI

- [How to Pick a Slice Name](#)
- [How to Login to Nodes](#)
- [How to Write Install Scripts](#)
- [How to pre-reserve GENI resources \(aka How to Notify GMOC\)](#)

[Tutorials](#)
[PlanetLab](#)
[Index](#)



Omni

- [How to Specify Aggregates In Omni](#)
- [How to Specify RSpecs In Omni](#)
- [How to Add Users to an `omni_config`](#)

OpenFlow

- [How to Install OVS in ProtoGENI](#)
- [How to Run OpenFlow tutorial](#)
- [How to write OpenFlow v3 rspecs](#)
- [How to run the OpenFlow Nox controller in Fedora8 \(OS in many MyPlc hosts\)](#)

RSpecs

- [How to Convert ProtoGENI v2 to GENI v3 RSpecs](#)



- Sign Up for :
 - geni-users@googlegroups.com
 - geni-announce@geni.net
 - experimenters@geni.net
- Use #geni IRC chatroom
- Go over HowTo pages

[*http://groups.geni.net/geni/wiki/GENIExperimenter/GetHelp*](http://groups.geni.net/geni/wiki/GENIExperimenter/GetHelp)

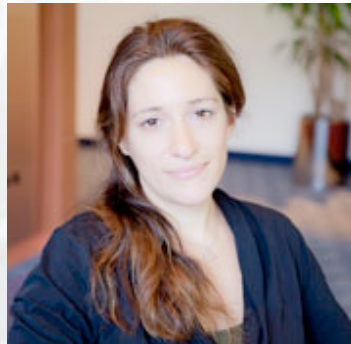
Have a question?

help@geni.net

which is an email list which only goes to members of the GPO including...



Sarah Edwards



Niky Riga



Vic Thomas

(However, the archive of the list is public)

- **21st meeting, open to all:** **Sign up for geni-announce@geni.net**
October 20-23, 2014, **Indiana University, Bloomington**
 - Planning & discussion for experimenters, software, infrastructure
 - Tutorials
 - **Travel grants** to US academics for participant diversity
- **Computer and Networking Experimental Research Using Testbeds (CNERT)**
 - **Co-located with ICNP 2014** (October 24, 2014)
- **Train-the-TA** – Early Fall 2014 over WebEx/Google Hangout



- Let us know about your publications
 - Including MS and PhD theses
- Join us at GENI events
- Join the Google+ GENI Community